

North America Project References



Project: Healthcare Enterprises, Ambulatory Surgery Center
Location: Shrewsbury, MA
Architect: JACA Architects
Completion: 2018
Material(s): Colormat Scripto, Jasmine | Colormat Classic, Storm | exposed fastening



Project: Midtown Park
Location: Wilmington, DE
Architect: L2 Partridge Architects
Completion: 2018
Material(s): Colormat Classic, Jasmine & Natural | Colormat Scripto, Natural | exposed fastening



Project: AAA Branch Office
Location: East Providence, RI
Architect: StudioMEJA
Completion: 2018
Material(s): Colormat Classic & Scripto, Charcoal | exposed fastening



Project: Brigham & Women's Medical Office Building
Location: Westwood, MA
Architect: Cannon Design
Completion: 2018
Material(s): Colormat Classic, Slate & Natural | exposed fastening



Project: IBEW Local 104
Location: Mansfield, MA
Architect: UDA Architects
Completion: 2018
Material(s): Colormat Classic, Slate | exposed fastening



Project: 500 North Gulph Road
Location: King of Prussia, PA
Architect: Zimmer Gunsul Frasca Architects (ZGF)
Completion: 2018
Material(s): Decoboard Classic, White DCL01 | concealed mechanical fastening



Project: North Providence Public Safety Complex
Location: North Providence, RI
Architect: RGB
Completion: 2019
Material(s): Colormat Scripto, Slate | exposed fastening



Project: Cone Health MRI #3
Location: Greensboro, NC
Architect: LITTLE
Completion: 2019
Material(s): Colormat Classic, Sunset & Raspberry | Decoboard Classic, Black | exposed fastening



Project: Meeting Street School
Location: Providence, RI
Architect: KITE / Saccoccio Associates
Completion: 2019
Material(s): Colormat Classic, Natural & Camel | exposed fastening



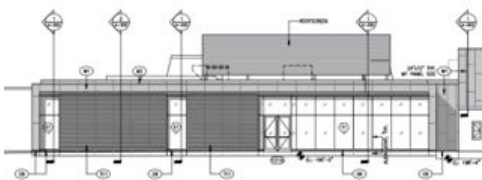
Project: Coventry Public Safety Complex
Location: Coventry, RI
Architect: Edward Rowse Architects
Completion: 2019
Material(s): Colormat Classic, Storm & Caribbean Blue | exposed fastening



Project: Akron College of Business
Location: Akron, OH
Architect: CBLH Design
Completion: 2019
Material(s): Colormat Classic & Scripto, Natural | exposed fastening



Project: Eden Park Elementary School
Location: Cranston, RI
Architect: Fielding Nair International
Completion: 2019
Material(s): Colormat Scripto, Natural, Camel, Daybreak, Raspberry, Champagne, & Caribbean | exposed fastening



Project: Scarsdale Library
Location: Scarsdale, NY
Architect: Dattner Architects
Completion: 2020
Material(s): Colormat Classic, Storm | concealed mechanical fastening



Project: Chestnut Place
Location: Quincy, MA
Architect: The Architectural Team
Completion: 2020
Material(s): Colormat Classic, Slate & Storm | Colormat Scripto, Natural & Earth | exposed fastening



Project: Albany High School – Phase 1 & 2
Location: Albany, NY
Architect: CSArch
Completion: 2020 (*anticipated*)
Material(s): Colormat Scripto, Slate & Storm | Decoboard Classic, White DCL01 & Custom Blue | exposed fastening



Project: Jefferson Early Childhood Center
Location: Wheaton, IL
Architect: Legat Architects
Completion: 2020 (*anticipated*)
Material(s): Colormat Scripto, Slate, and Camel | exposed fastening



Project: Sarah's Circle
Location: Chicago, IL
Architect: Perkins + Will
Completion: 2021 (*anticipated*)
Material(s): Colormat Classic, Jasmine, Slate, and Storm | exposed fastening