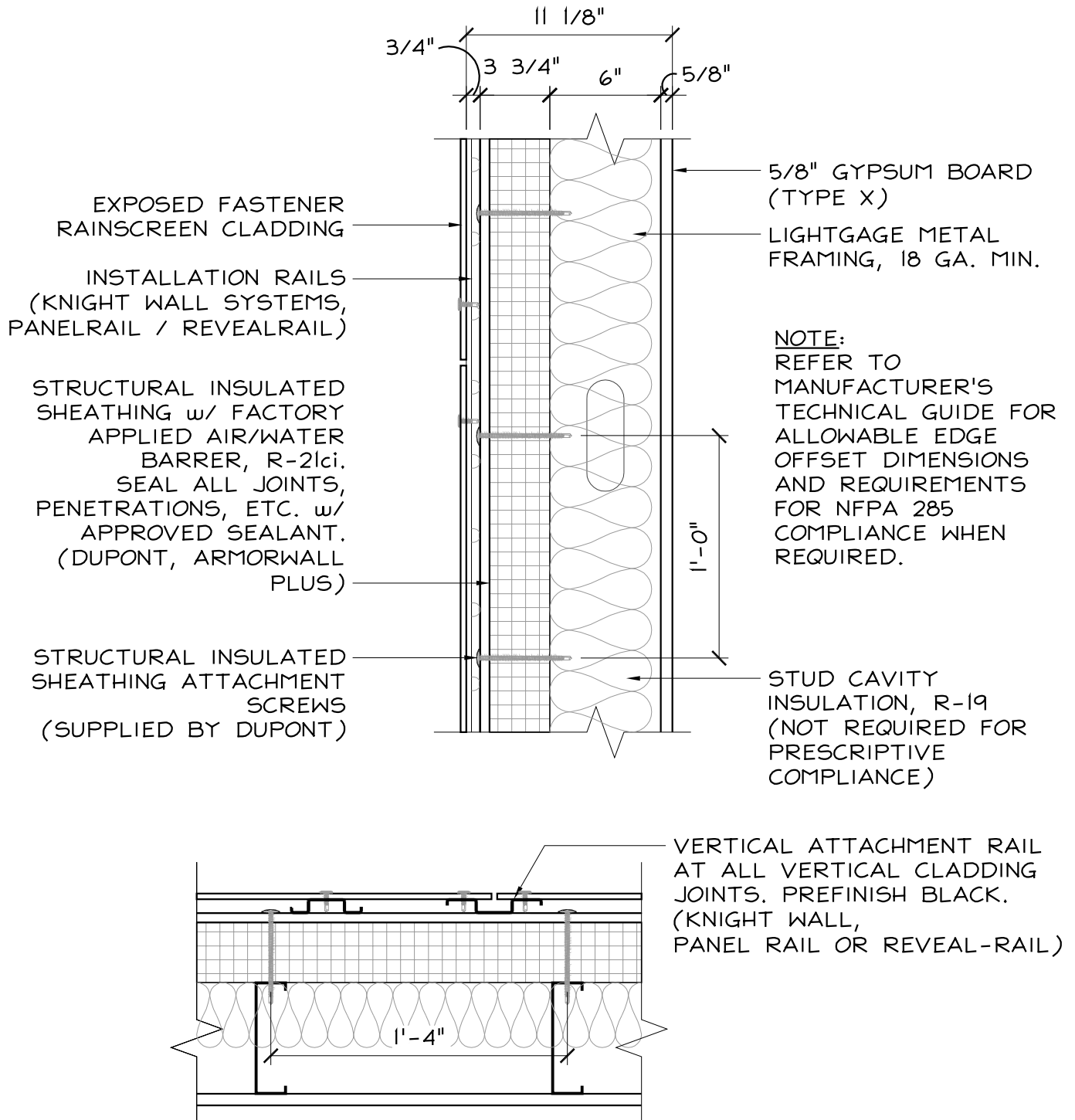




CODE = R-13 + R-10ci | U-0.055

BASE = R-21ci | U-0.047*

OPTIMIZED = R-21ci + R-19 | U-0.034*



PACE

BUILDING ENVELOPE REPRESENTATIVES

One Rockdale Street | Braintree, MA 02184
781-541-5060 | www.pacerepresentatives.com

EXPOSED FASTENER CLADDING SYSTEM w/
ARMORWALL PLUS STRUCTURAL INSULATED SHEATHING
& METAL STUD BACK-UP
(IECC 2021 + MA STRETCH ENERGY CODE)

Sketch #:

SK-01

Sheet: 1 of 1