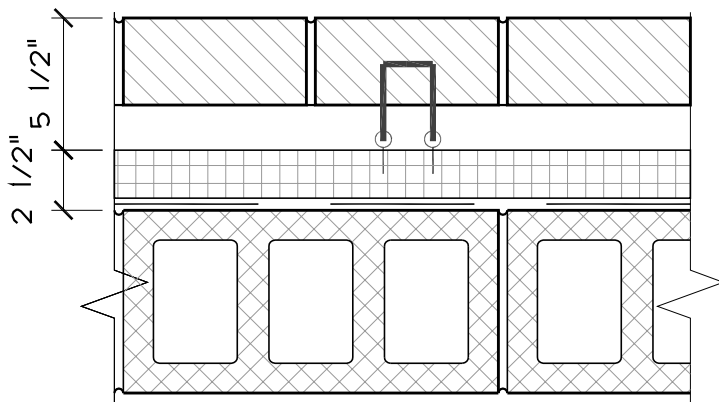
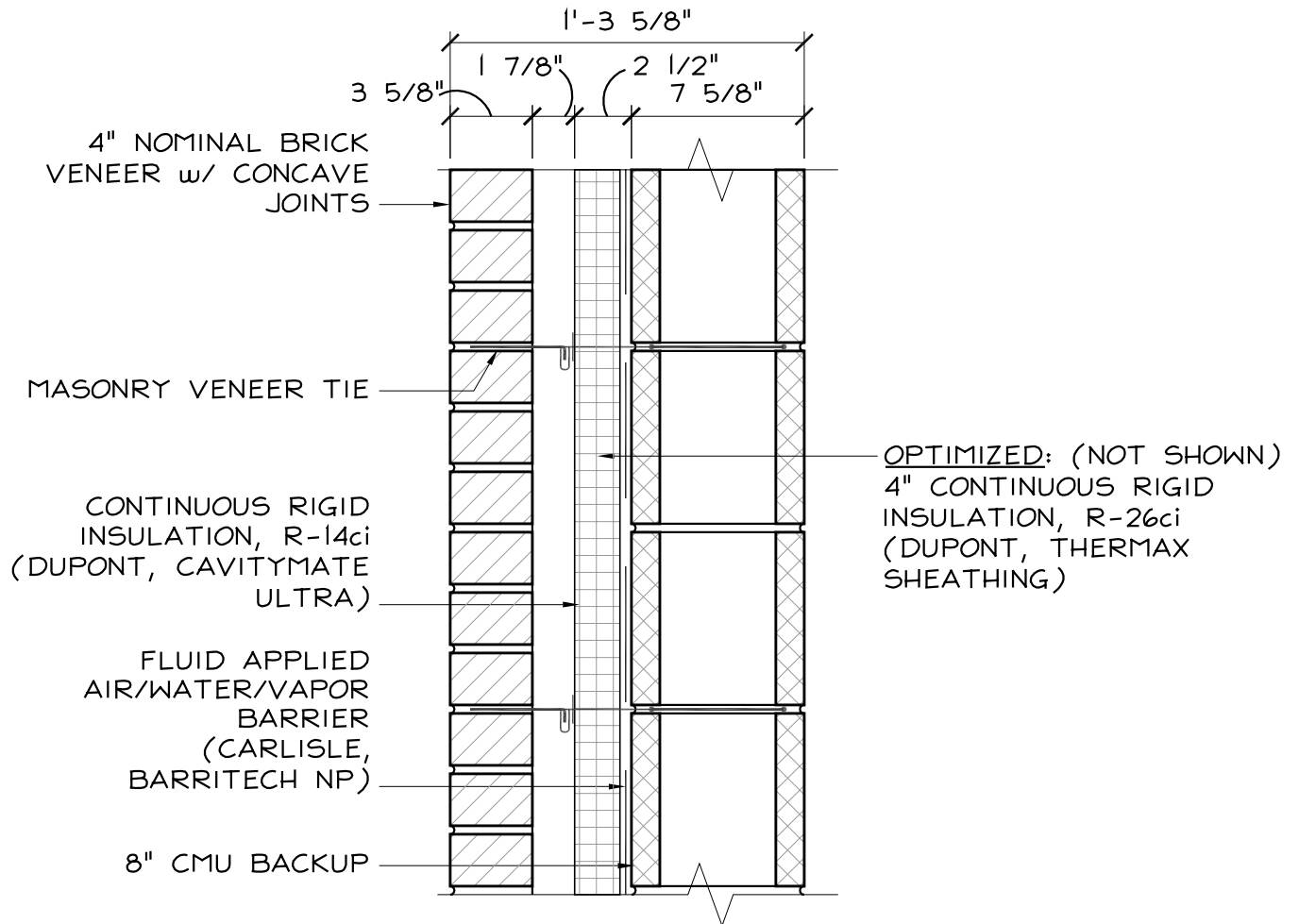




CODE = R-11.4ci | U-0.090

BASE = R-14ci | U-0.084*

OPTIMIZED = R-26ci | U-0.050*



NFPA 285 NOTES:

- MAXIMUM 3" STYROFOAM INSULATION THICKNESS
- USE HEADER CONDITIONS AS SHOWN IN MANUFACTURER'S EXTENSION REPORT

MASONRY VENEER w /CMU

SCALE: 1 1/2" = 1'-0"



BUILDING ENVELOPE REPRESENTATIVES

One Rockdale Street | Braintree, MA 02184
781-541-5060 | www.pacerepresentatives.com

MASONRY VENEER w/ RIGID INSULATION
& CMU BACK-UP
(IECC 2021 + MA STRETCH ENERGY CODE)

Sketch #:

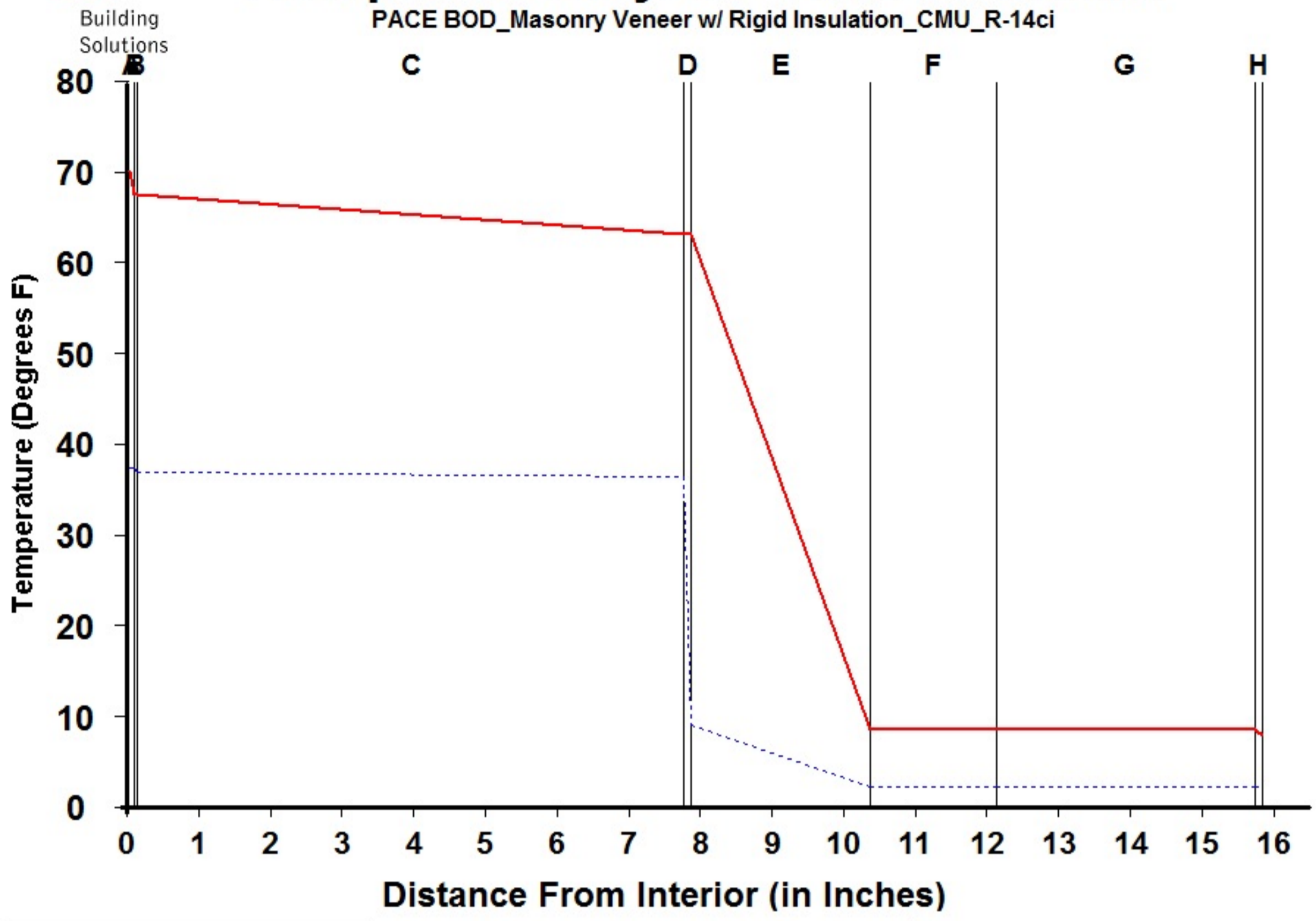
SK-01

Sheet: 1 of 1



Dewpoint Analysis - Dow Chemical

PACE BOD_Masonry Vener w/ Rigid Insulation_CMU_R-14ci



Legend	
—	Actual Temperature
- - - -	Dewpoint Temperature

Dewpoint Theory predicts condensation in a system at any point where the actual and dewpoint temperature lines cross.

Conditions:		
	Interior	Exterior
Temperature	70.0	7.7
Humidity	30.0	75.0

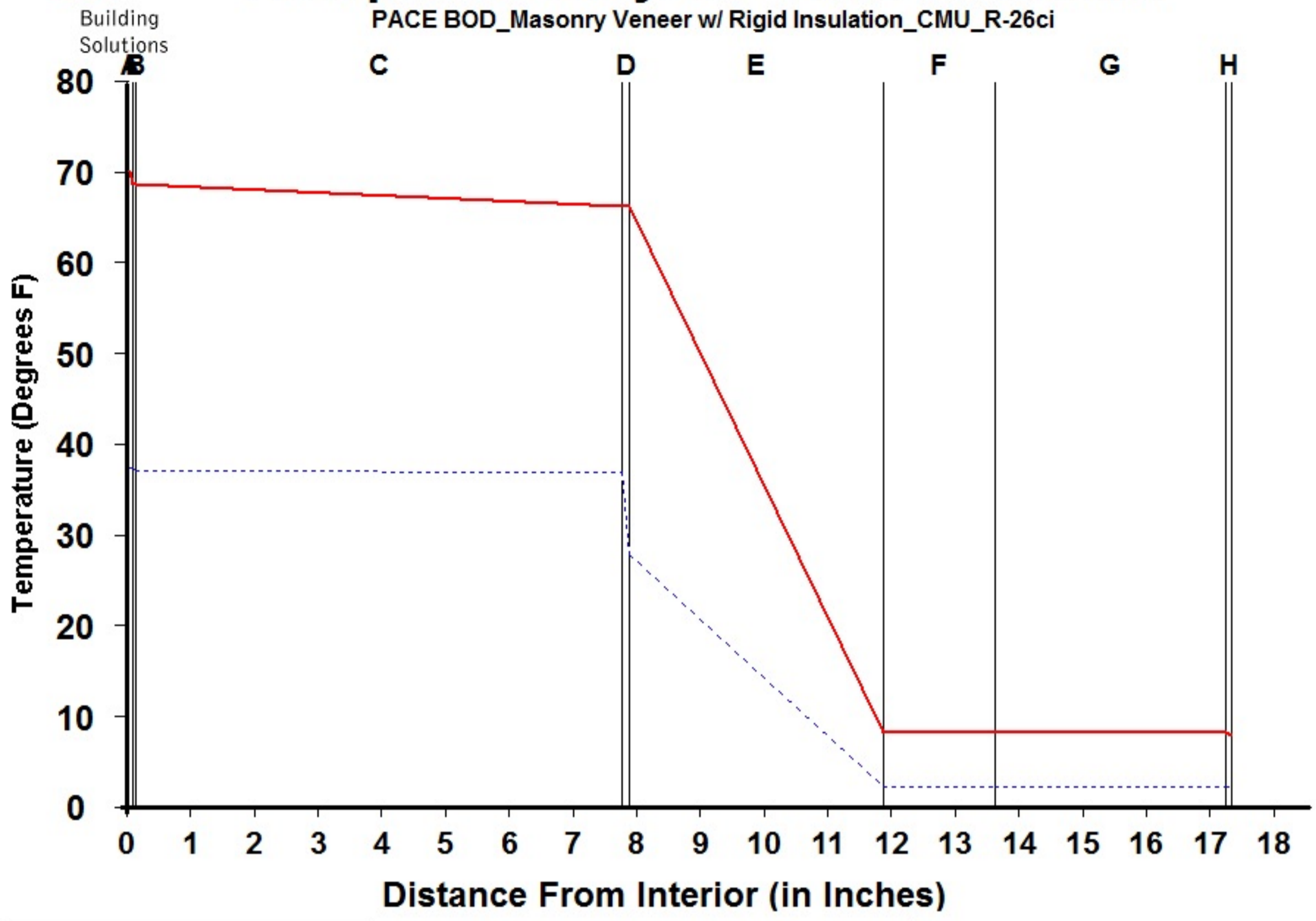
Component Name	Thickness	R-Value	Rep
A Interior Air Film	0.100	0.68	0.001
B Latex Paint 2 Coat	0.050	0.01	0.500
C CMU	7.625	1.10	0.400
D CCW Barritech NP	0.100	0.01	20.000
E DuPont Cavitymate Ultra	2.500	14.00	2.250
F Wall Air Space NonRefl	1.750	0.00	0.000
G Masonry Vener (vented)	3.625	0.00	0.000
H Out Air Film Winter	0.100	0.17	0.001
I			
J			
K			
L			
TOTAL	15.850	15.97	23.152

Interface	Temperature Actual	Temperature Dewpnt	Accum (oz/day-sqft)
-A	70.00	37.17	0.000
AB	67.35	37.17	0.000
BC	67.31	36.71	0.000
CD	63.02	36.35	0.000
DE	62.98	8.89	0.000
EF	8.36	2.08	0.000
FG	8.36	2.08	0.000
GH	8.36	2.08	0.000
HI	7.70	2.08	0.000
IJ			
JK			
KL			
L-			



Dewpoint Analysis - Dow Chemical

PACE BOD_Masonry Veneer w/ Rigid Insulation_CMU_R-26ci



Legend	
—	Actual Temperature
- - - -	Dewpoint Temperature

Dewpoint Theory predicts condensation in a system at any point where the actual and dewpoint temperature lines cross.

Conditions:		
	Interior	Exterior
Temperature	70.0	7.7
Humidity	30.0	75.0

Component Name	Thickness	R-Value	Rep
A Interior Air Film	0.100	0.68	0.001
B Latex Paint 2 Coat	0.050	0.01	0.500
C CMU	7.625	1.10	0.400
D CCW Barritech NP	0.100	0.01	20.000
E DuPont Thermax Sheathing	4.000	26.00	30.000
F Wall Air Space NonRefl	1.750	0.00	0.000
G Masonry Veneer (vented)	3.625	0.00	0.000
H Out Air Film Winter	0.100	0.17	0.001
I			
J			
K			
L			
TOTAL	17.350	27.97	50.902

Interface	Temperature Actual	Temperature Dewpnt	Accum (oz/day-sqft)
-A	70.00	37.17	0.000
AB	68.49	37.17	0.000
BC	68.46	36.96	0.000
CD	66.01	36.79	0.000
DE	65.99	27.71	0.000
EF	8.08	2.08	0.000
FG	8.08	2.08	0.000
GH	8.08	2.08	0.000
HI	7.70	2.08	0.000
IJ			
JK			
KL			
L-			