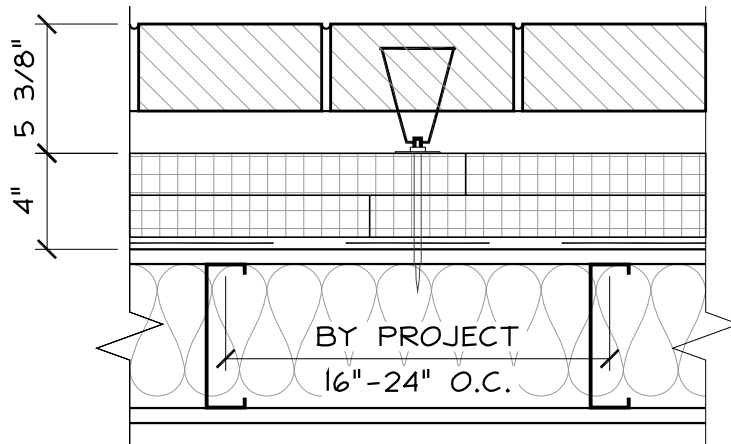
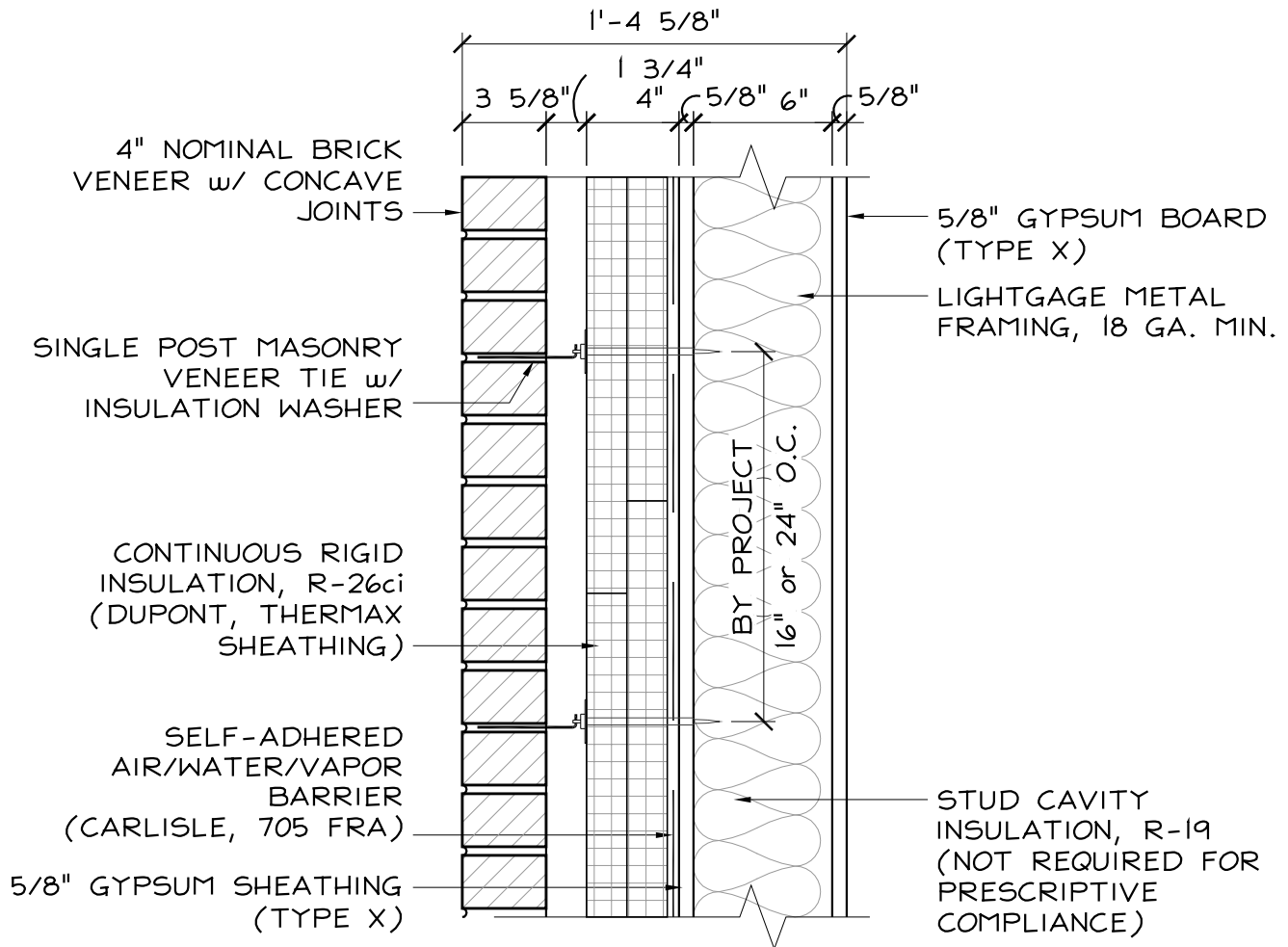




CODE = R-13 + R-10ci | U-0.055

BASE = R-26ci | U-0.050*

OPTIMIZED = R-26ci + R-19 | U-0.037*



NFPA 285 NOTES:

- MAXIMUM 4 1/4" THERMAX INSULATION THICKNESS

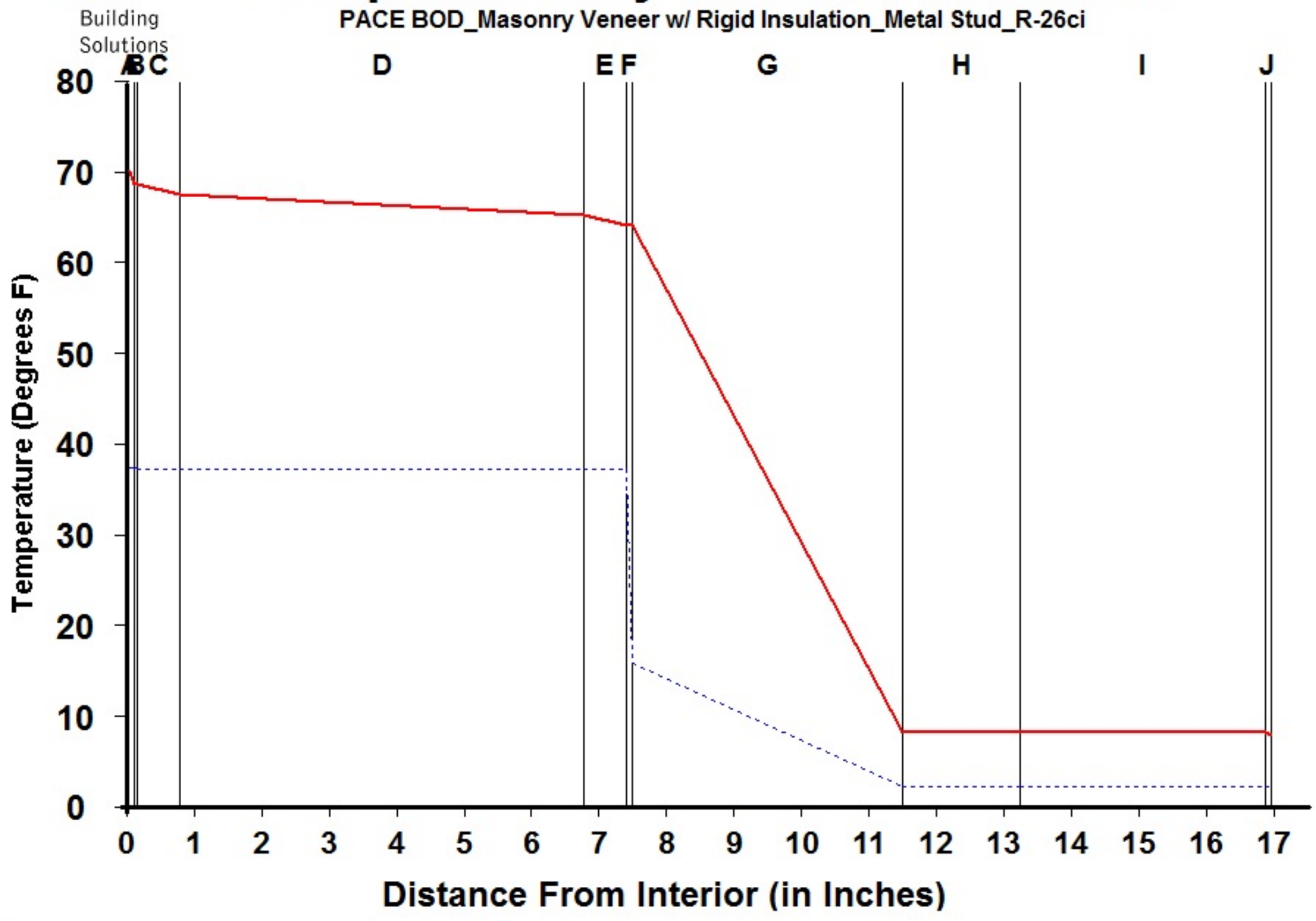
MASONRY VENEER w/ METAL STUD

SCALE: 1 1/2" = 1'-0"



Dewpoint Analysis - Dow Chemical

PACE BOD_Masonry Vener w/ Rigid Insulation_Metal Stud_R-26ci



Legend	
—	Actual Temperature
- - - -	Dewpoint Temperature

Dewpoint Theory predicts condensation in a system at any point where the actual and dewpoint temperature lines cross.

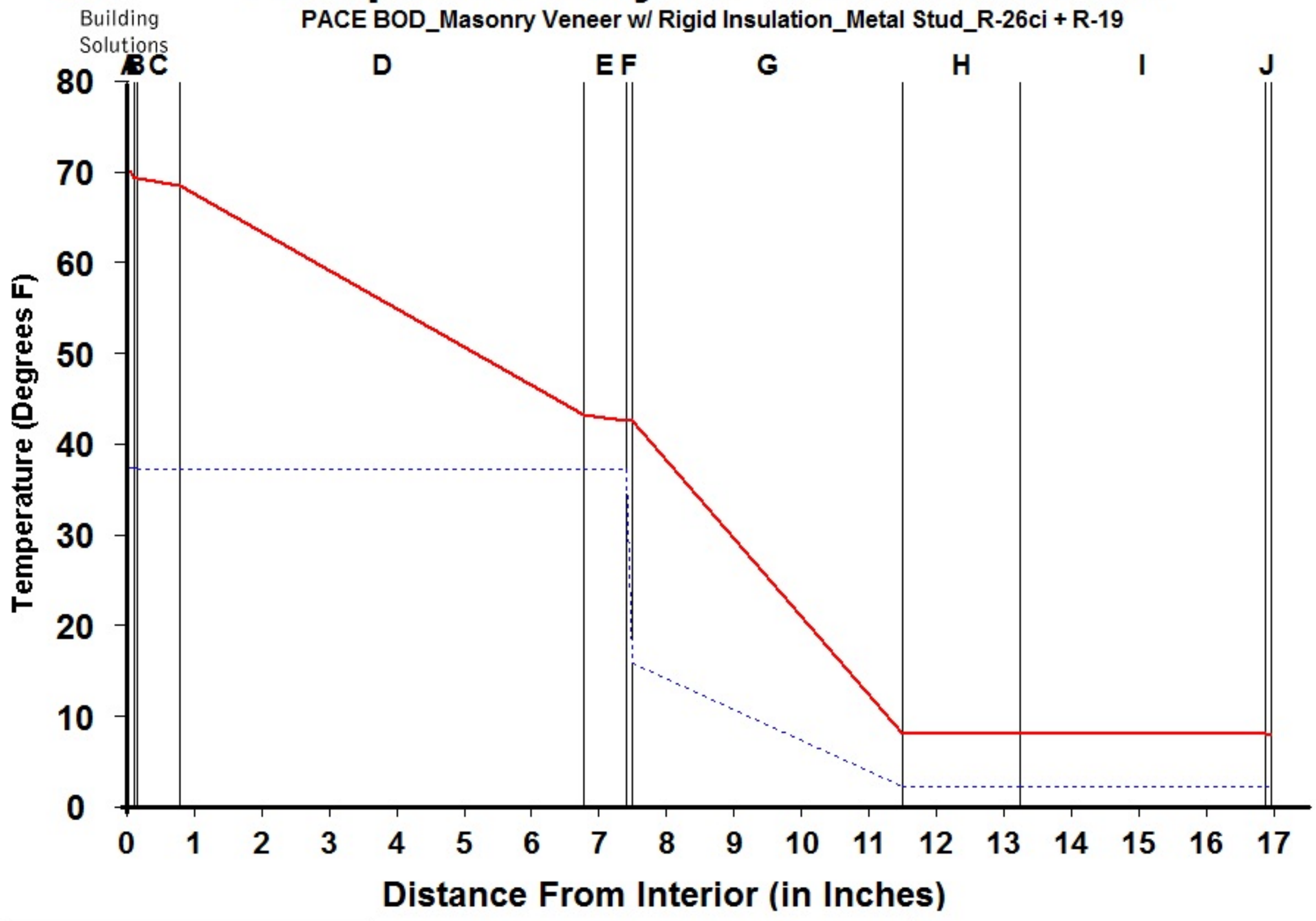
Conditions:		
	Interior	Exterior
Temperature	70.0	7.7
Humidity	30.0	75.0

Component Name	Thickness	R-Value	Rep	Interface	Temperature Actual	Temperature Dewpnt	Accum (oz/day-sqft)
A Interior Air Film	0.100	0.68	0.001	-A	70.00	37.17	0.000
B Latex Paint 2 Coat	0.050	0.01	0.500	AB	68.54	37.17	0.000
C Gypsum Board	0.625	0.56	0.023	BC	68.52	37.09	0.000
D Wall Air Space NonRefl	6.000	1.01	0.006	CD	67.31	37.08	0.000
E Gypsum Sheathing	0.625	0.56	0.027	DE	65.14	37.08	0.000
F CCW 705FRA	0.100	0.01	100.000	EF	63.94	37.08	0.000
G DuPont Thermax Sheathing	4.000	26.00	30.000	FG	63.92	15.67	0.000
H Wall Air Space NonRefl	1.750	0.00	0.000	GH	8.07	2.08	0.000
I Masonry Vener (vented)	3.625	0.00	0.000	HI	8.07	2.08	0.000
J Out Air Film Winter	0.100	0.17	0.001	IJ	8.07	2.08	0.000
K				JK	7.70	2.08	0.000
L				KL			
				L-			
TOTAL	16.975	29.00	130.558				



Dewpoint Analysis - Dow Chemical

PACE BOD_Masonry Vener w/ Rigid Insulation_Metal Stud_R-26ci + R-19



Legend

- Actual Temperature
- - - Dewpoint Temperature

Dewpoint Theory predicts condensation in a system at any point where the actual and dewpoint temperature lines cross.

Conditions:

	Interior	Exterior
Temperature	70.0	7.7
Humidity	30.0	75.0

Component Name	Thickness	R-Value	Rep	Interface	Temperature Actual	Temperature Dewpnt	Accum (oz/day-sqft)
A Interior Air Film	0.100	0.68	0.001	-A	70.00	37.17	0.000
B Latex Paint 2 Coat	0.050	0.01	0.500	AB	69.10	37.17	0.000
C Gypsum Board	0.625	0.56	0.023	BC	69.09	37.09	0.000
D Batt Insulation	6.000	19.00	0.010	CD	68.34	37.08	0.000
E Gypsum Sheathing	0.625	0.56	0.027	DE	43.15	37.08	0.000
F CCW 705FRA	0.100	0.01	100.000	EF	42.41	37.08	0.000
G DuPont Thermax Sheathing	4.000	26.00	30.000	FG	42.40	15.67	0.000
H Wall Air Space NonRefl	1.750	0.00	0.000	GH	7.93	2.08	0.000
I Masonry Vener (vented)	3.625	0.00	0.000	HI	7.93	2.08	0.000
J Out Air Film Winter	0.100	0.17	0.001	IJ	7.93	2.08	0.000
K				JK	7.70	2.08	0.000
L				KL			
				L-			
TOTAL	16.975	46.99	130.562				