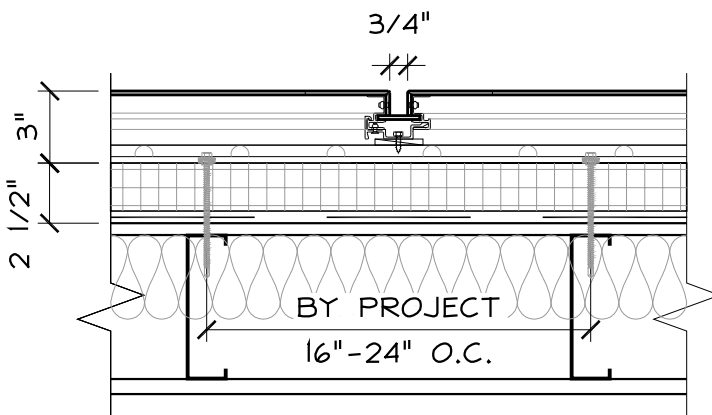
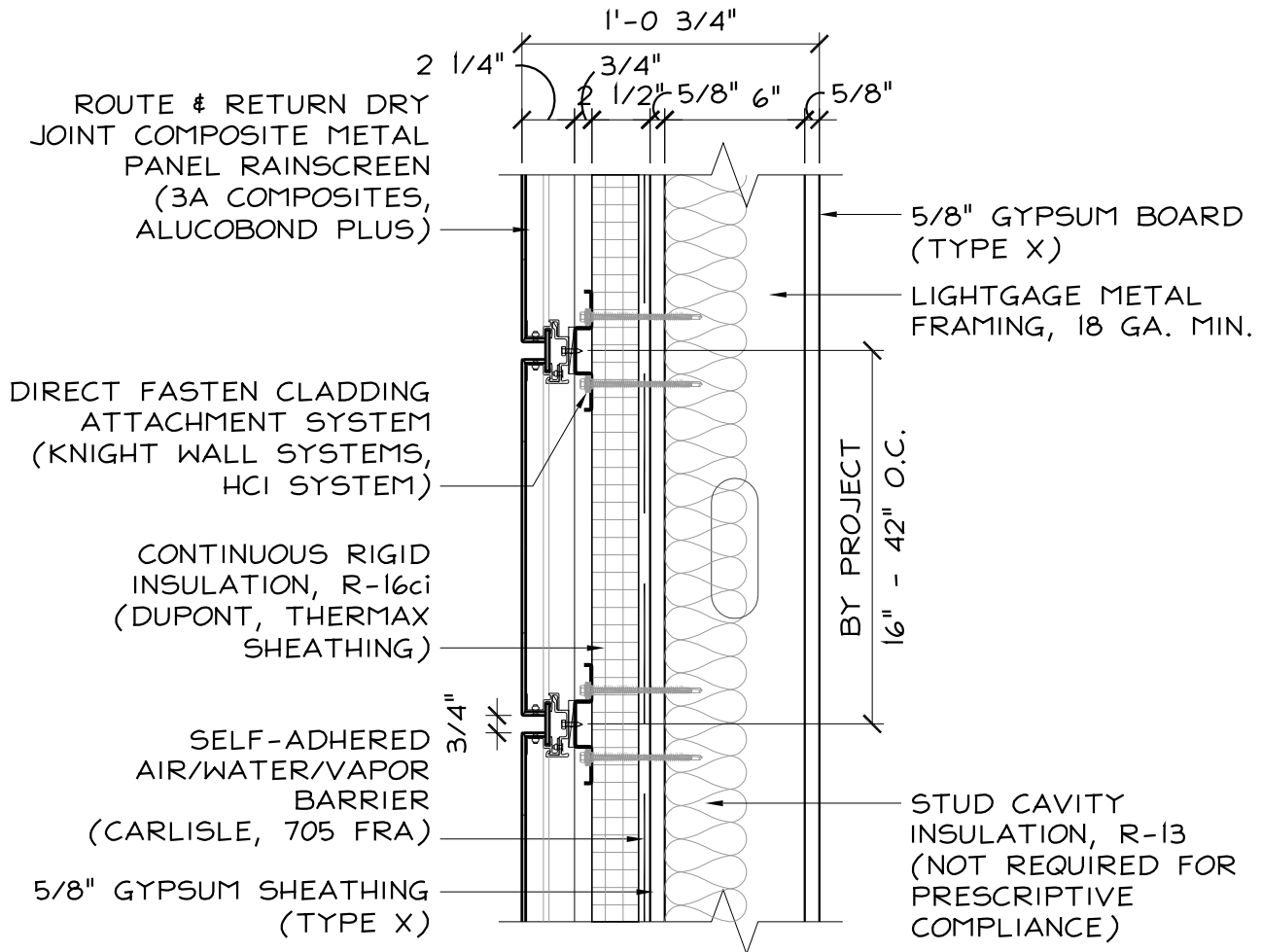


CODE = R-13 + R-10ci | U-0.055

BASE = R-16ci | U-0.054\*

OPTIMIZED = R-16ci + R-13 | U-0.042\*



**NOTE:**  
FABRICATED MCM SYSTEM DIMENSION INCLUDES 1/4" SHIM SPACE. MAXIMUM 3" SYSTEM DEPTH WHEN NFPA 285 COMPLIANCE IS REQUIRED.

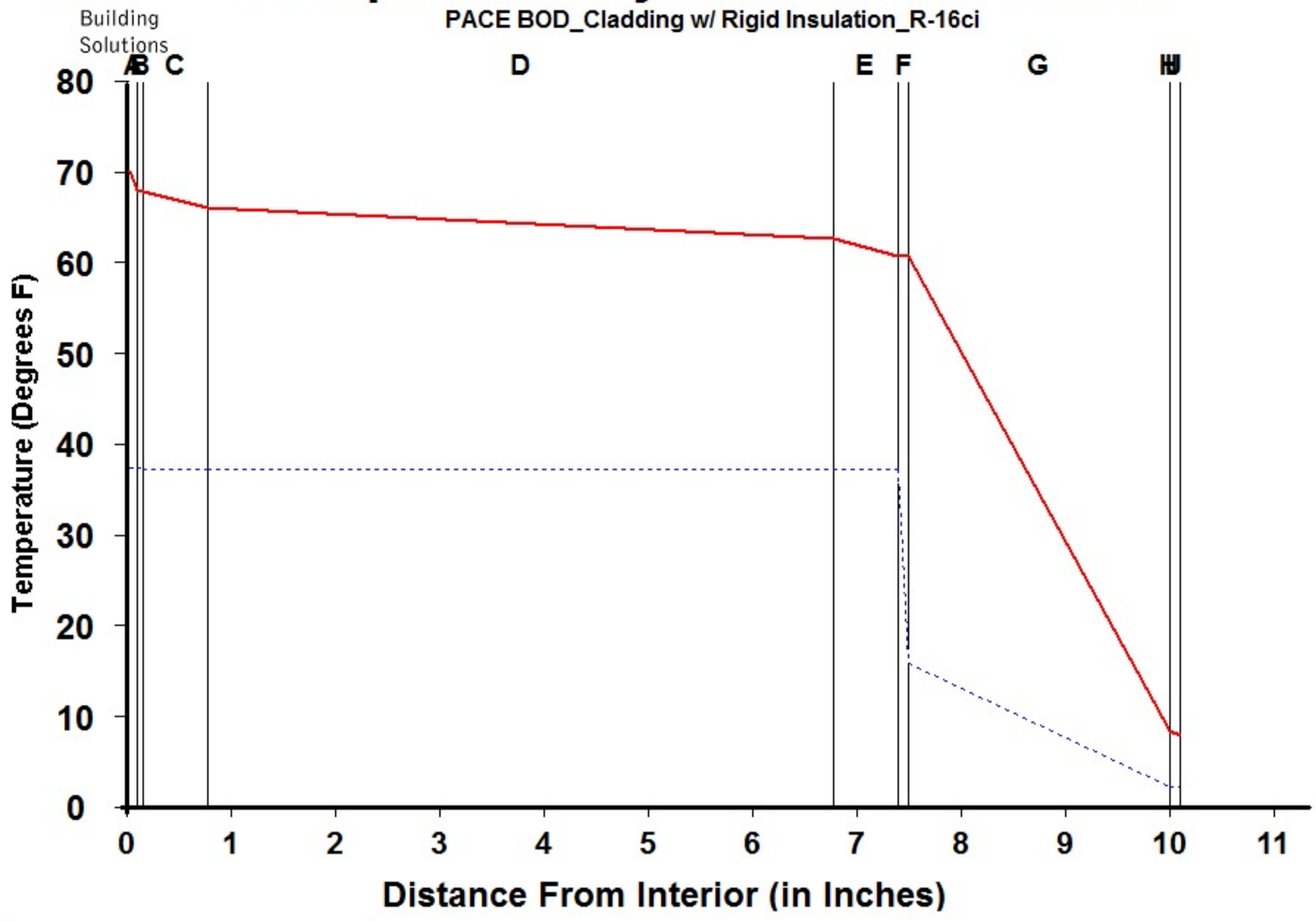
## TYPICAL MCM WALL ASSEMBLY w/ METAL STUD

SCALE: 1 1/2" = 1'-0"



# Dewpoint Analysis - Dow Chemical

PACE BOD\_Cladding w/ Rigid Insulation\_R-16ci



Legend	
<span style="color: red;">—</span>	Actual Temperature
<span style="color: blue;">- - - -</span>	Dewpoint Temperature

**Dewpoint Theory** predicts condensation in a system at any point where the actual and dewpoint temperature lines cross.

Conditions:		
	Interior	Exterior
Temperature	70.0	7.7
Humidity	30.0	75.0

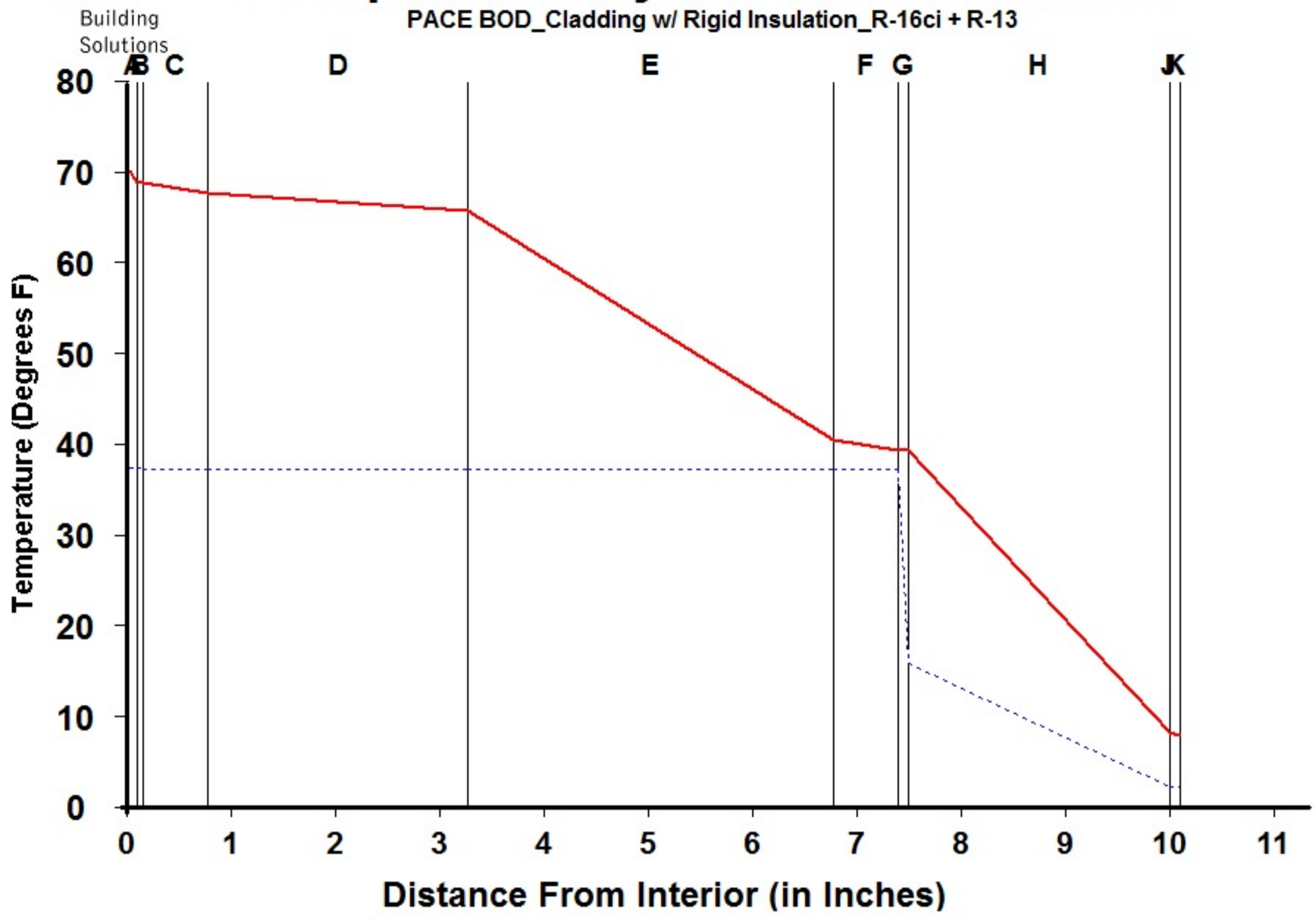
Component Name	Thickness	R-Value	Rep
A Interior Air Film	0.100	0.68	0.001
B Latex Paint 2 Coat	0.050	0.01	0.500
C Gypsum Board	0.625	0.56	0.023
D Wall Air Space NonRefl	6.000	1.05	0.006
E Gypsum Sheathing	0.625	0.56	0.027
F CCW 705FRA	0.100	0.01	100.000
G DuPont Thermax Sheathing	2.500	16.00	30.000
H Wall Air Space NonRefl	0.000	0.00	0.000
I Ventilated Cladding	0.000	0.00	0.000
J Out Air Film Winter	0.100	0.17	0.001
K			
L			
<b>TOTAL</b>	<b>10.100</b>	<b>19.04</b>	<b>130.558</b>

Interface	Temperature Actual	Temperature Dewpnt	Accum (oz/day-sqft)
-A	70.00	37.17	0.000
AB	67.78	37.17	0.000
BC	67.74	37.09	0.000
CD	65.91	37.08	0.000
DE	62.47	37.08	0.000
EF	60.64	37.08	0.000
FG	60.61	15.67	0.000
GH	8.26	2.08	0.000
HI	8.26	2.08	0.000
IJ	8.26	2.08	0.000
JK	7.70	2.08	0.000
KL			
L-			



# Dewpoint Analysis - Dow Chemical

PACE BOD\_Cladding w/ Rigid Insulation\_R-16ci + R-13



### Legend

- Actual Temperature
- - - Dewpoint Temperature

**Dewpoint Theory** predicts condensation in a system at any point where the actual and dewpoint temperature lines cross.

### Conditions:

	Interior	Exterior
Temperature	70.0	7.7
Humidity	30.0	75.0

Component Name	Thickness	R-Value	Rep	Interface	Temperature Actual	Temperature Dewpnt	Accum (oz/day-sqft)
A Interior Air Film	0.100	0.68	0.001	-A	70.00	37.17	0.000
B Latex Paint 2 Coat	0.050	0.01	0.500	AB	68.68	37.17	0.000
C Gypsum Board	0.625	0.56	0.023	BC	68.66	37.09	0.000
D Wall Air Space NonRefl	2.500	1.01	0.006	CD	67.57	37.08	0.000
E Batt Insulation	3.500	13.00	0.010	DE	65.60	37.08	0.000
F Gypsum Sheathing	0.625	0.56	0.027	EF	40.29	37.08	0.000
G CCW 705FRA	0.100	0.01	100.000	FG	39.20	37.08	0.000
H DuPont Thermax Sheathing	2.500	16.00	30.000	GH	39.18	15.67	0.000
I Wall Air Space NonRefl	0.000	0.00	0.000	HI	8.03	2.08	0.000
J Ventilated Cladding	0.000	0.00	0.000	IJ	8.03	2.08	0.000
K Out Air Film Winter	0.100	0.17	0.001	JK	8.03	2.08	0.000
L				KL	7.70	2.08	0.000
<b>TOTAL</b>	<b>10.100</b>	<b>32.00</b>	<b>130.568</b>	<b>L-</b>			