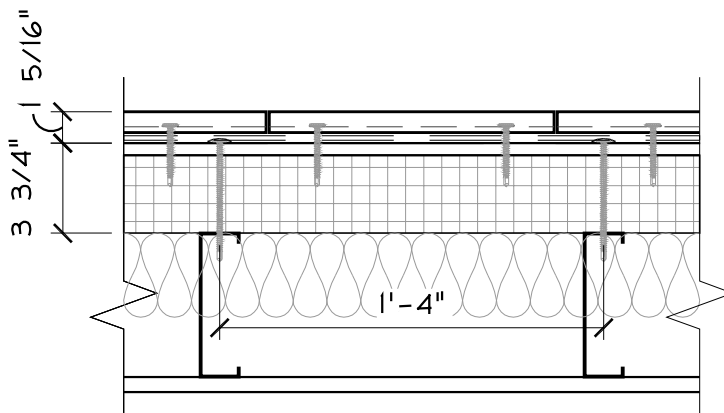
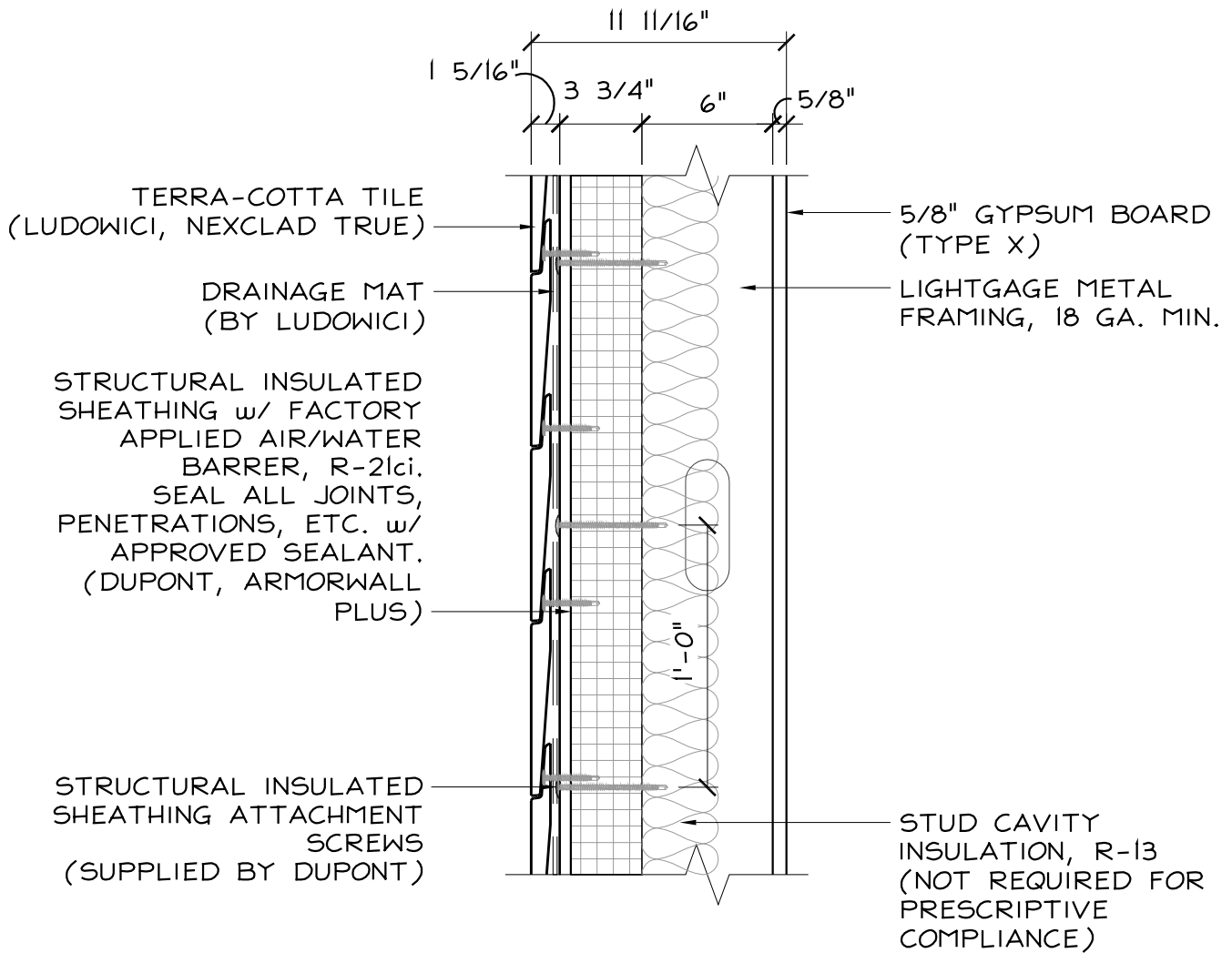


CODE = R-13 + R-10ci | U-0.055

BASE = R-21ci | U-0.042*

OPTIMIZED = R-21ci + R-13 | U-0.035*



TERRA-COTTA TILE CLADDING w/ METAL STUD

SCALE: 1 1/2" = 1'-0"

PACE

BUILDING ENVELOPE REPRESENTATIVES

One Rockdale Street | Braintree, MA 02184
781-541-5060 | www.pacerepresentatives.com

TERRA-COTTA TILE CLADDING SYSTEM w/ STRUCTURAL
INSULATED SHEATHING & METAL STUD BACK-UP
(IECC 2021 - CLIMATE ZONE 5)

Sketch #:

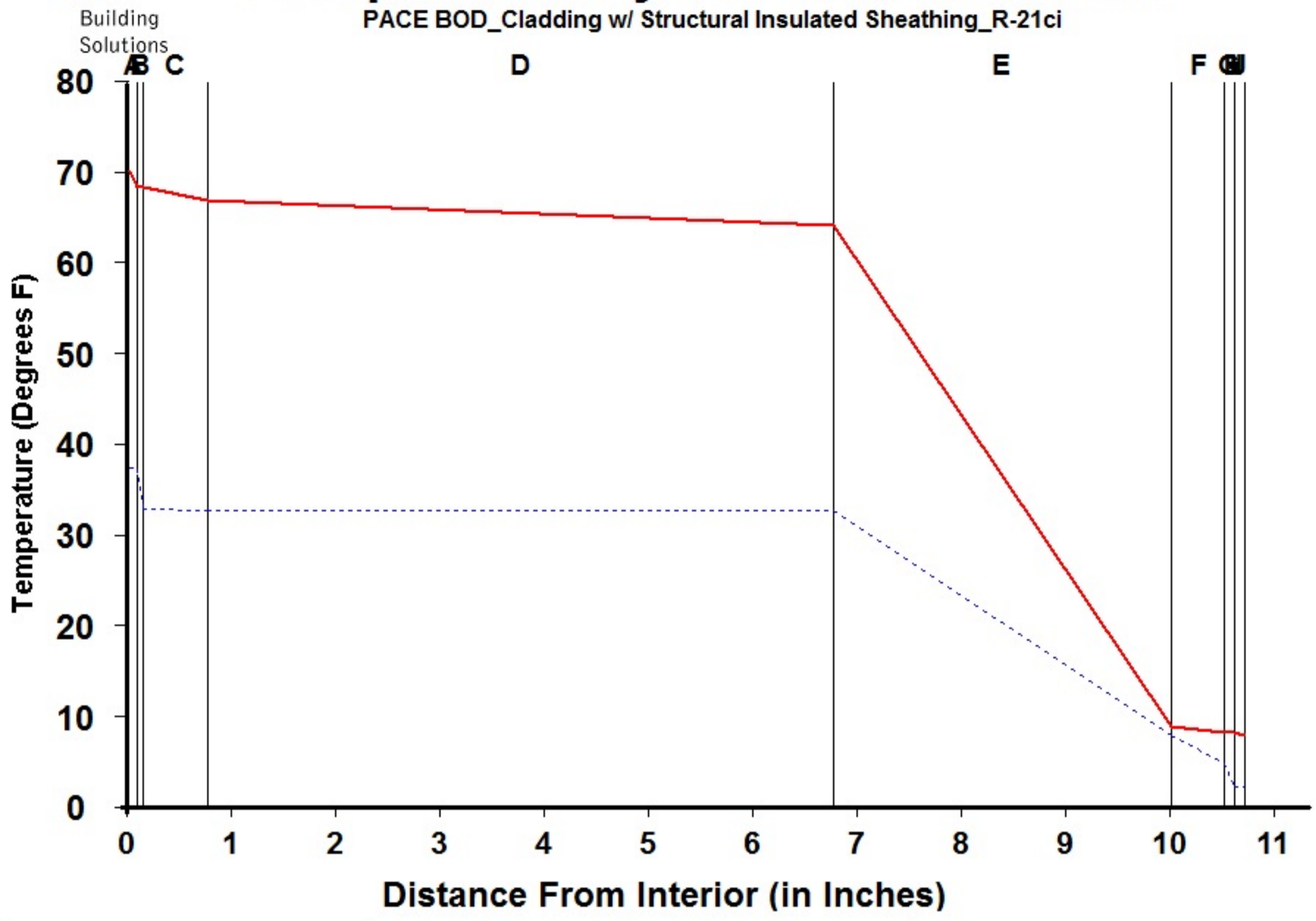
SK-01

Sheet: 1 of 1



Dewpoint Analysis - Dow Chemical

PACE BOD_Cladding w/ Structural Insulated Sheathing_R-21ci



Legend	
—	Actual Temperature
- - -	Dewpoint Temperature

Dewpoint Theory predicts condensation in a system at any point where the actual and dewpoint temperature lines cross.

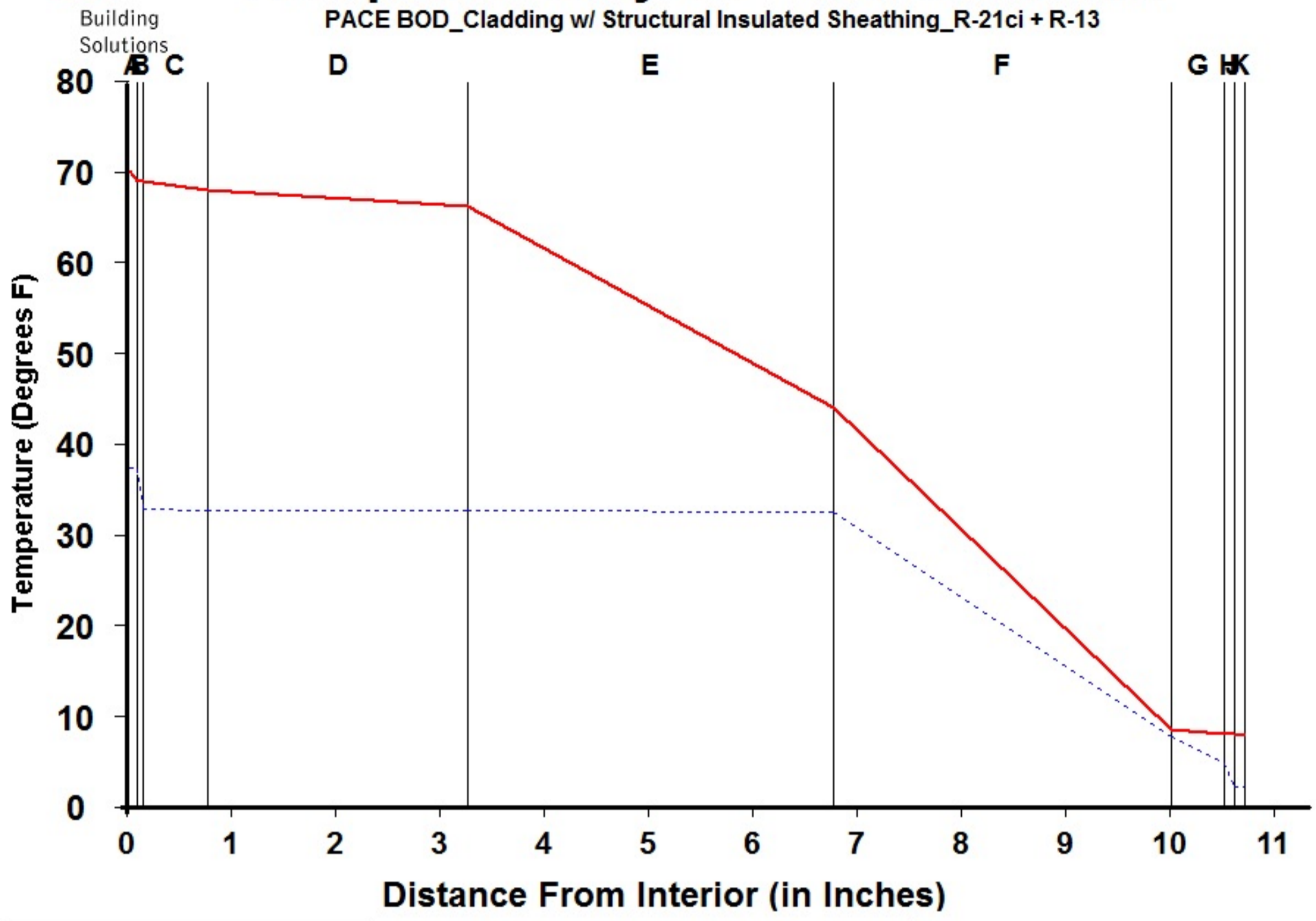
Conditions:		
	Interior	Exterior
Temperature	70.0	7.7
Humidity	30.0	75.0

Component Name	Thickness	R-Value	Rep	Interface	Temperature Actual	Temperature Dewpnt	Accum (oz/day-sqft)
A Interior Air Film	0.100	0.68	0.001	-A	70.00	37.17	0.000
B Latex Paint 2 Coat	0.050	0.01	0.500	AB	68.19	37.16	0.000
C Gypsum Board	0.625	0.56	0.023	BC	68.17	32.75	0.000
D Wall Air Space NonRefl	6.000	1.01	0.006	CD	66.68	32.54	0.000
E Polyurethane Insulation	3.250	20.75	1.788	DE	63.99	32.48	0.000
F MgO Board	0.500	0.25	0.112	EF	8.82	7.69	0.000
G Air/Water Barrier	0.100	0.00	0.083	FG	8.15	4.68	0.000
H Wall Air Space NonRefl	0.000	0.00	0.000	GH	8.15	2.11	0.000
I Ventilated Cladding	0.000	0.00	0.000	HI	8.15	2.11	0.000
J Out Air Film Winter	0.100	0.17	0.001	IJ	8.15	2.11	0.000
K				JK	7.70	2.08	0.000
L				KL			
TOTAL	10.725	23.43	2.514	L-			



Dewpoint Analysis - Dow Chemical

PACE BOD_Cladding w/ Structural Insulated Sheathing_R-21ci + R-13



Legend

- Actual Temperature
- - - Dewpoint Temperature

Dewpoint Theory predicts condensation in a system at any point where the actual and dewpoint temperature lines cross.

Conditions:

	Interior	Exterior
Temperature	70.0	7.7
Humidity	30.0	75.0

Component Name	Thickness	R-Value	Rep	Interface	Temperature Actual	Temperature Dewpnt	Accum (oz/day-sqft)
A Interior Air Film	0.100	0.68	0.001	-A	70.00	37.17	0.000
B Latex Paint 2 Coat	0.050	0.01	0.500	AB	68.84	37.16	0.000
C Gypsum Board	0.625	0.56	0.023	BC	68.82	32.77	0.000
D Wall Air Space NonRefl	2.500	1.01	0.006	CD	67.86	32.56	0.000
E Batt Insulation	3.500	13.00	0.010	DE	66.14	32.50	0.000
F Polyurethane Insulation	3.250	20.75	1.788	EF	43.90	32.41	0.000
G MgO Board	0.500	0.25	0.112	FG	8.42	7.67	0.000
H Air/Water Barrier	0.100	0.00	0.083	GH	7.99	4.67	0.000
I Wall Air Space NonRefl	0.000	0.00	0.000	HI	7.99	2.11	0.000
J Ventilated Cladding	0.000	0.00	0.000	IJ	7.99	2.11	0.000
K Out Air Film Winter	0.100	0.17	0.001	JK	7.99	2.11	0.000
L				KL	7.70	2.08	0.000
TOTAL	10.725	36.43	2.524	L-			