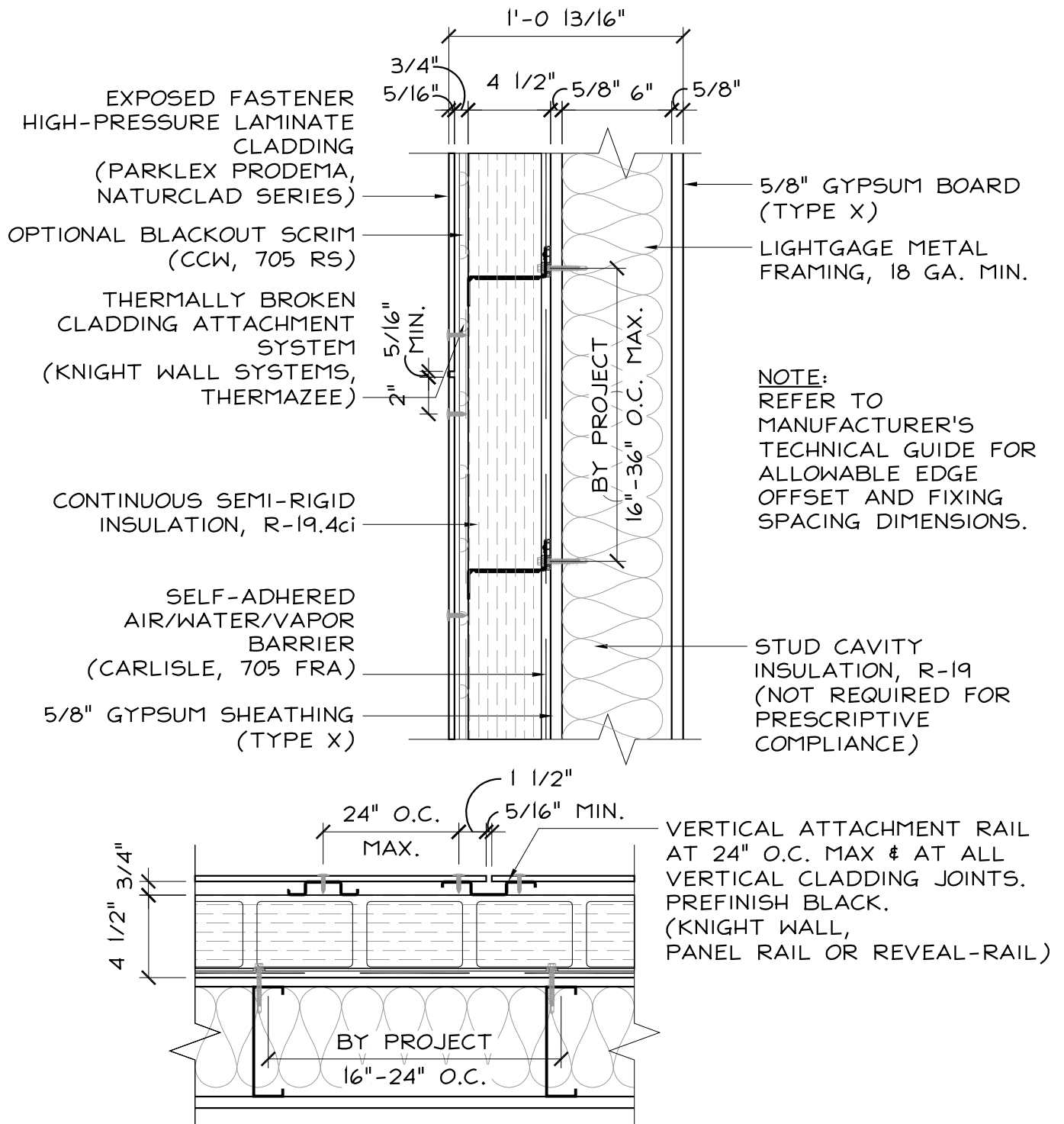


CODE = R-13 + R-10ci | U-0.055

BASE = R-19.4ci | U-0.053\*

OPTIMIZED = R-19.4ci + R-19 | U-0.036\*



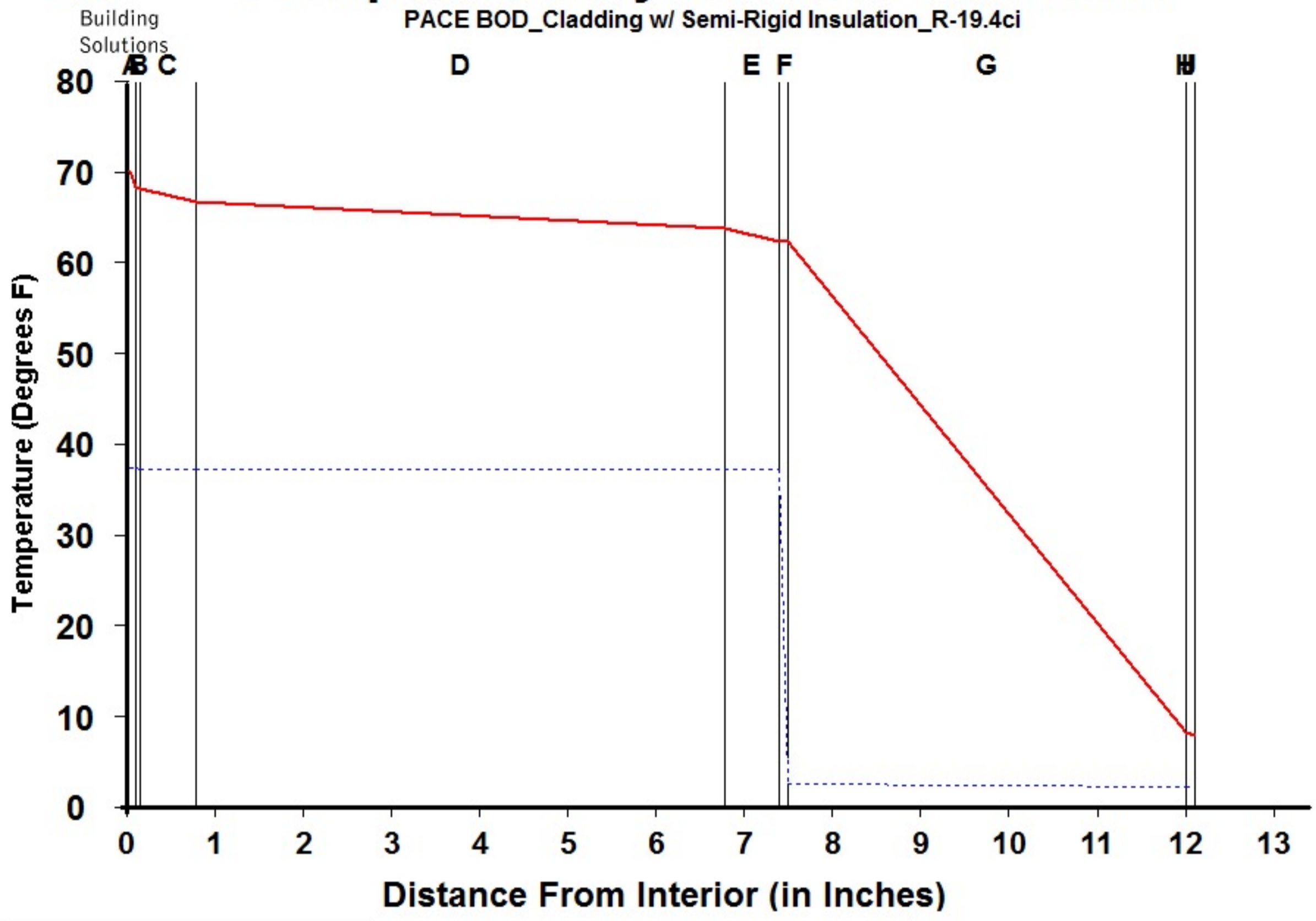
## PHENOLIC CLADDING w/ METAL STUD

SCALE: 1 1/2" = 1'-0"



# Dewpoint Analysis - Dow Chemical

PACE BOD\_Cladding w/ Semi-Rigid Insulation\_R-19.4ci



Legend	
<span style="color: red;">—</span>	Actual Temperature
<span style="color: blue;">- - - -</span>	Dewpoint Temperature

**Dewpoint Theory** predicts condensation in a system at any point where the actual and dewpoint temperature lines cross.

Conditions:		
	Interior	Exterior
Temperature	70.0	7.7
Humidity	30.0	75.0

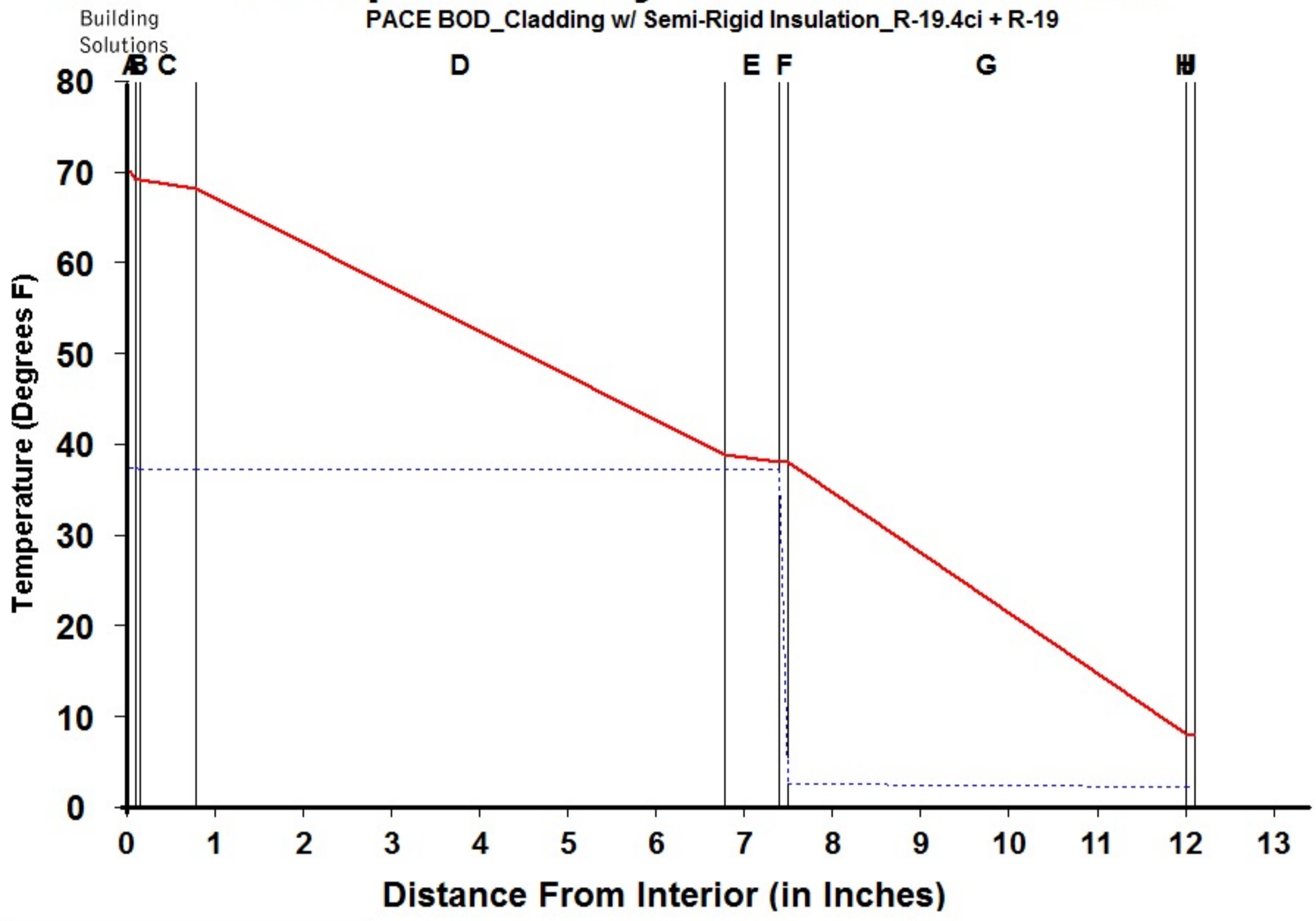
Component Name	Thickness	R-Value	Rep	Interface	Temperature Actual	Temperature Dewpnt	Accum (oz/day-sqft)
A Interior Air Film	0.100	0.68	0.001	-A	70.00	37.17	0.000
B Latex Paint 2 Coat	0.050	0.01	0.500	AB	68.10	37.17	0.000
C Gypsum Board	0.625	0.56	0.023	BC	68.08	37.06	0.000
D Wall Air Space NonRefl	6.000	1.01	0.006	CD	66.52	37.06	0.000
E Gypsum Sheathing	0.625	0.56	0.027	DE	63.70	37.06	0.000
F CCW 705FRA	0.100	0.01	100.000	EF	62.14	37.05	0.000
G Mineral Wool (semi-rigid)	4.500	19.35	0.450	FG	62.11	2.44	0.000
H Wall Air Space NonRefl	0.000	0.00	0.000	GH	8.17	2.08	0.000
I Ventilated Cladding	0.000	0.00	0.000	HI	8.17	2.08	0.000
J Out Air Film Winter	0.100	0.17	0.001	IJ	8.17	2.08	0.000
K				JK	7.70	2.08	0.000
L				KL			
<b>TOTAL</b>	<b>12.100</b>	<b>22.35</b>	<b>101.008</b>	<b>L-</b>			





# Dewpoint Analysis - Dow Chemical

PACE BOD\_Cladding w/ Semi-Rigid Insulation\_R-19.4ci + R-19



Legend	
<span style="color: red;">—</span>	Actual Temperature
<span style="color: blue;">- - - -</span>	Dewpoint Temperature

**Dewpoint Theory** predicts condensation in a system at any point where the actual and dewpoint temperature lines cross.

Conditions:		
	Interior	Exterior
Temperature	70.0	7.7
Humidity	30.0	75.0

Component Name	Thickness	R-Value	Rep	Interface	Temperature Actual	Temperature Dewpnt	Accum (oz/day-sqft)
A Interior Air Film	0.100	0.68	0.001	-A	70.00	37.17	0.000
B Latex Paint 2 Coat	0.050	0.01	0.500	AB	68.95	37.17	0.000
C Gypsum Board	0.625	0.56	0.023	BC	68.93	37.06	0.000
D Batt Insulation	6.000	19.00	0.010	CD	68.07	37.06	0.000
E Gypsum Sheathing	0.625	0.56	0.027	DE	38.73	37.06	0.000
F CCW 705FRA	0.100	0.01	100.000	EF	37.86	37.05	0.000
G Mineral Wool (semi-rigid)	4.500	19.35	0.450	FG	37.85	2.44	0.000
H Wall Air Space NonRefl	0.000	0.00	0.000	GH	7.96	2.08	0.000
I Ventilated Cladding	0.000	0.00	0.000	HI	7.96	2.08	0.000
J Out Air Film Winter	0.100	0.17	0.001	IJ	7.96	2.08	0.000
K				JK	7.70	2.08	0.000
L				KL			
<b>TOTAL</b>	<b>12.100</b>	<b>40.34</b>	<b>101.012</b>	<b>L-</b>			