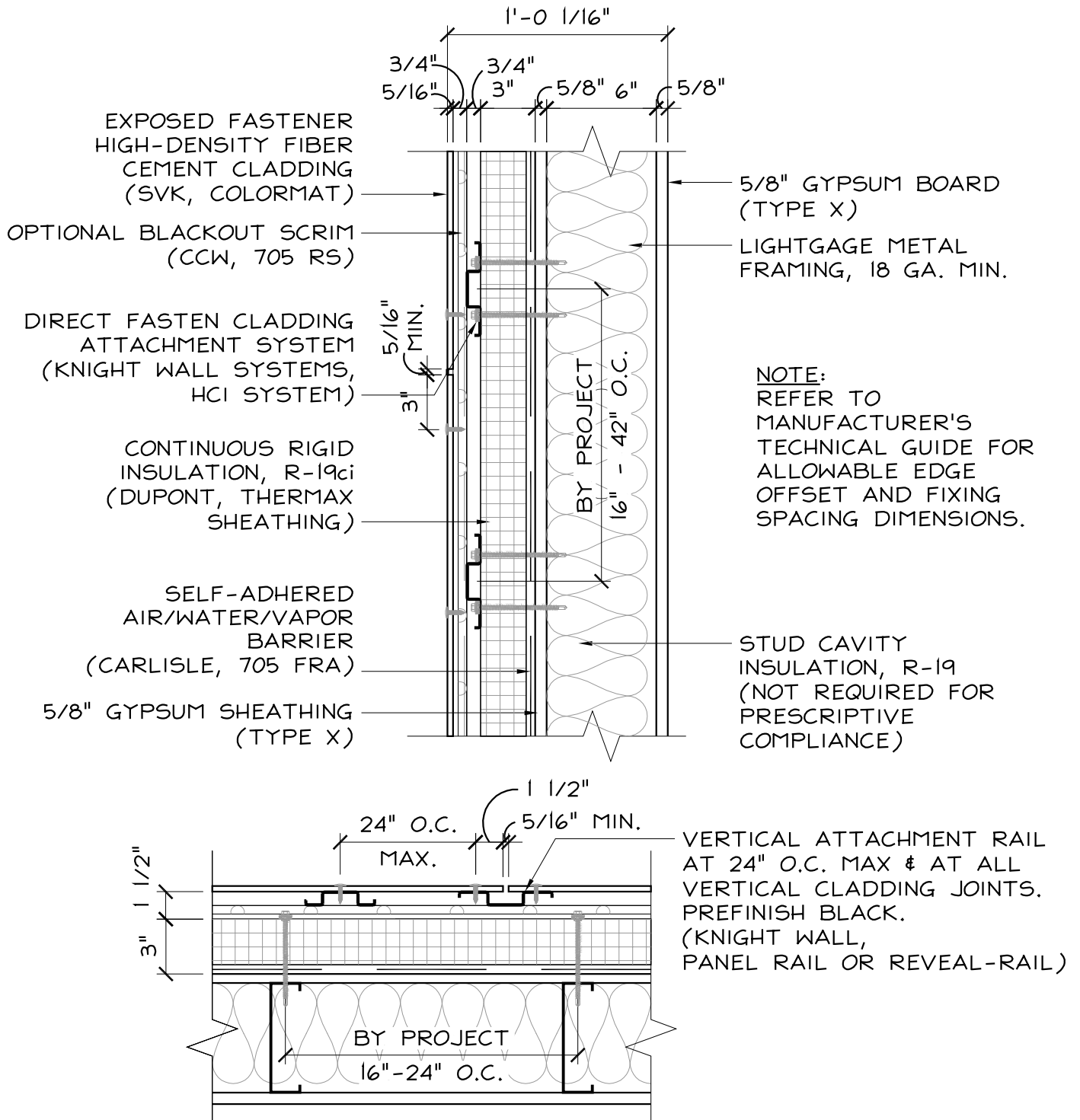




CODE = R-13 + R-10ci | U-0.055

BASE = R-19ci | U-0.050\*

OPTIMIZED = R-19ci + R-19 | U-0.036\*



## FIBER CEMENT CLADDING w/ METAL STUD

SCALE: 1 1/2" = 1'-0"

# PACE

BUILDING ENVELOPE REPRESENTATIVES

One Rockdale Street | Braintree, MA 02184  
781-541-5060 | www.pacerepresentatives.com

FIBER CEMENT CLADDING SYSTEM w/ THERMALLY  
BROKEN RAINSCREEN ATTCHMENT SYSTEM, RIGID  
CONTINUOUS INSULATION & METAL STUD BACK-UP  
(IECC 2021 + MA STRETCH ENERGY CODE)

Sketch #:

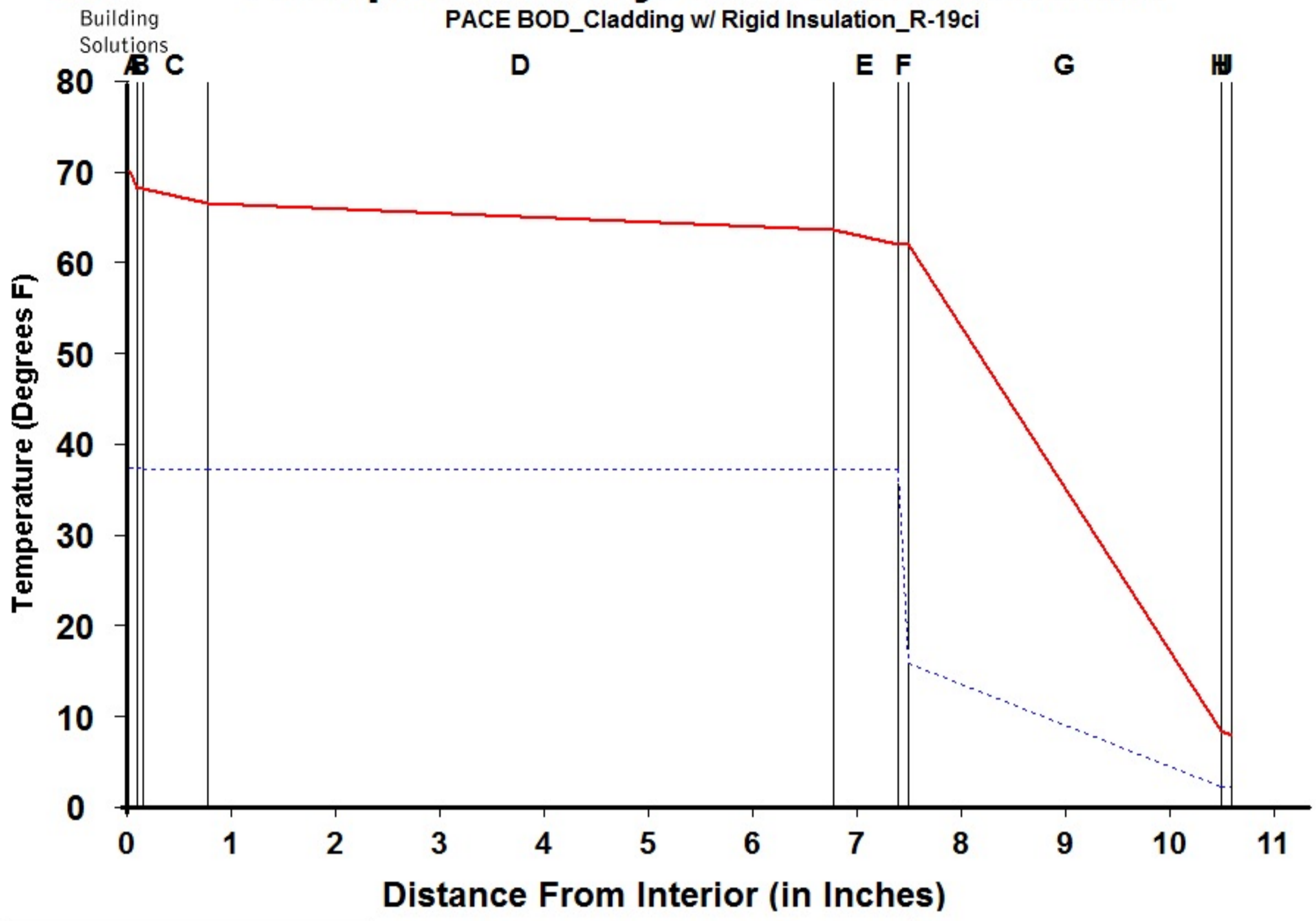
# SK-01

Sheet: 1 of 1



# Dewpoint Analysis - Dow Chemical

PACE BOD\_Cladding w/ Rigid Insulation\_R-19ci



Legend	
<span style="color: red;">—</span>	Actual Temperature
<span style="color: blue;">- - - -</span>	Dewpoint Temperature

**Dewpoint Theory** predicts condensation in a system at any point where the actual and dewpoint temperature lines cross.

Conditions:		
	Interior	Exterior
Temperature	70.0	7.7
Humidity	30.0	75.0

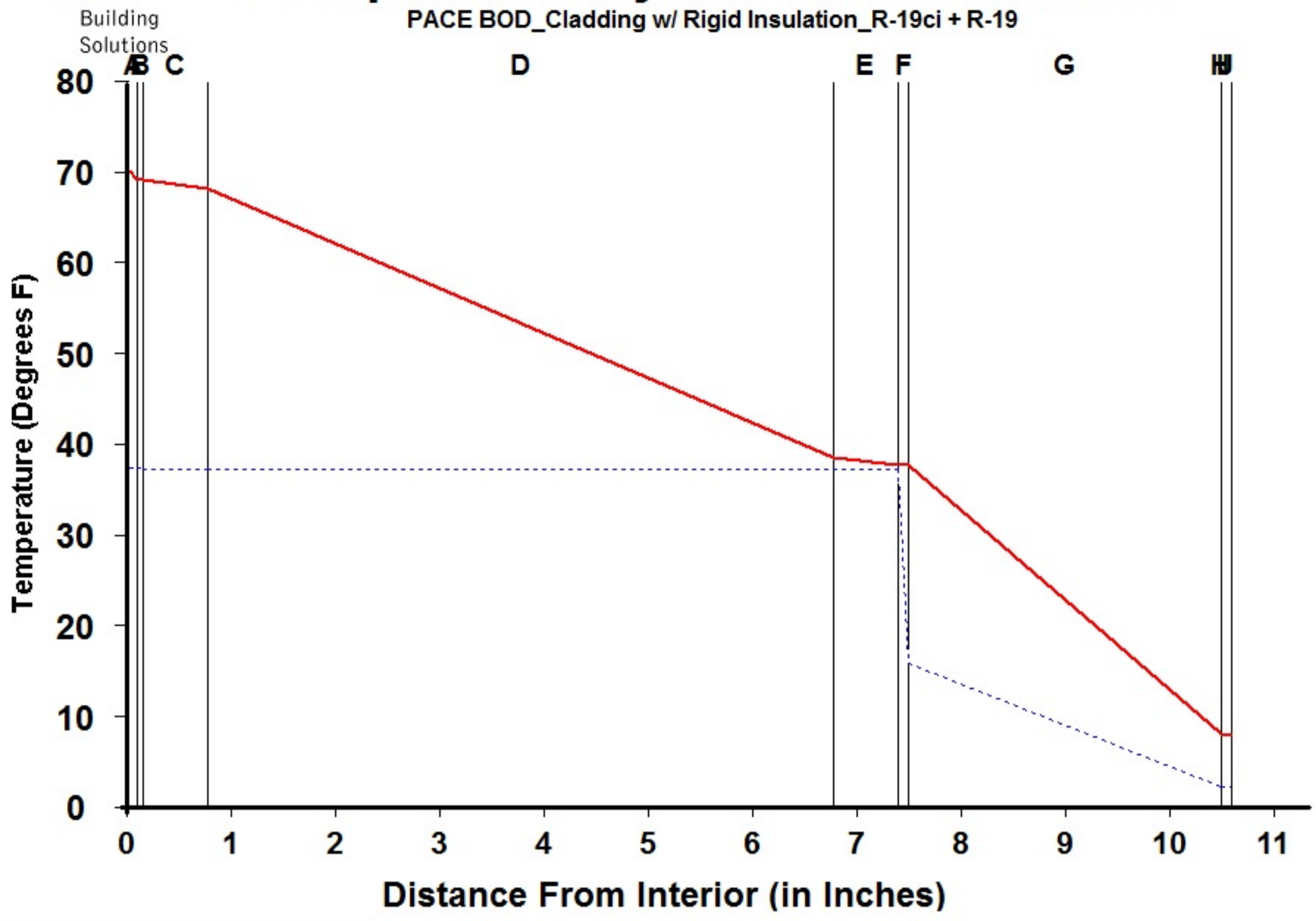
Component Name	Thickness	R-Value	Rep
A Interior Air Film	0.100	0.68	0.001
B Latex Paint 2 Coat	0.050	0.01	0.500
C Gypsum Board	0.625	0.56	0.023
D Wall Air Space NonRefl	6.000	1.05	0.006
E Gypsum Sheathing	0.625	0.56	0.027
F CCW 705FRA	0.100	0.01	100.000
G DuPont Thermax Sheathing	3.000	19.00	30.000
H Wall Air Space NonRefl	0.000	0.00	0.000
I Ventilated Cladding	0.000	0.00	0.000
J Out Air Film Winter	0.100	0.17	0.001
K			
L			
<b>TOTAL</b>	<b>10.600</b>	<b>22.04</b>	<b>130.558</b>

Interface	Temperature Actual	Temperature Dewpnt	Accum (oz/day-sqft)
-A	70.00	37.17	0.000
AB	68.08	37.17	0.000
BC	68.05	37.09	0.000
CD	66.47	37.08	0.000
DE	63.50	37.08	0.000
EF	61.92	37.08	0.000
FG	61.89	15.67	0.000
GH	8.18	2.08	0.000
HI	8.18	2.08	0.000
IJ	8.18	2.08	0.000
JK	7.70	2.08	0.000
KL			
L-			



# Dewpoint Analysis - Dow Chemical

PACE BOD\_Cladding w/ Rigid Insulation\_R-19ci + R-19



Legend	
<span style="color: red;">—</span>	Actual Temperature
<span style="color: blue;">- - - -</span>	Dewpoint Temperature

**Dewpoint Theory** predicts condensation in a system at any point where the actual and dewpoint temperature lines cross.

Conditions:		
	Interior	Exterior
Temperature	70.0	7.7
Humidity	30.0	75.0

Component Name	Thickness	R-Value	Rep
A Interior Air Film	0.100	0.68	0.001
B Latex Paint 2 Coat	0.050	0.01	0.500
C Gypsum Board	0.625	0.56	0.023
D Batt Insulation	6.000	19.00	0.010
E Gypsum Sheathing	0.625	0.56	0.027
F CCW 705FRA	0.100	0.01	100.000
G DuPont Thermax Sheathing	3.000	19.00	30.000
H Wall Air Space NonRefl	0.000	0.00	0.000
I Ventilated Cladding	0.000	0.00	0.000
J Out Air Film Winter	0.100	0.17	0.001
K			
L			
<b>TOTAL</b>	<b>10.600</b>	<b>39.99</b>	<b>130.562</b>

Interface	Temperature Actual	Temperature Dewpnt	Accum (oz/day-sqft)
-A	70.00	37.17	0.000
AB	68.94	37.17	0.000
BC	68.93	37.09	0.000
CD	68.05	37.08	0.000
DE	38.45	37.08	0.000
EF	37.58	37.08	0.000
FG	37.56	15.67	0.000
GH	7.96	2.08	0.000
HI	7.96	2.08	0.000
IJ	7.96	2.08	0.000
JK	7.70	2.08	0.000
KL			
L-			