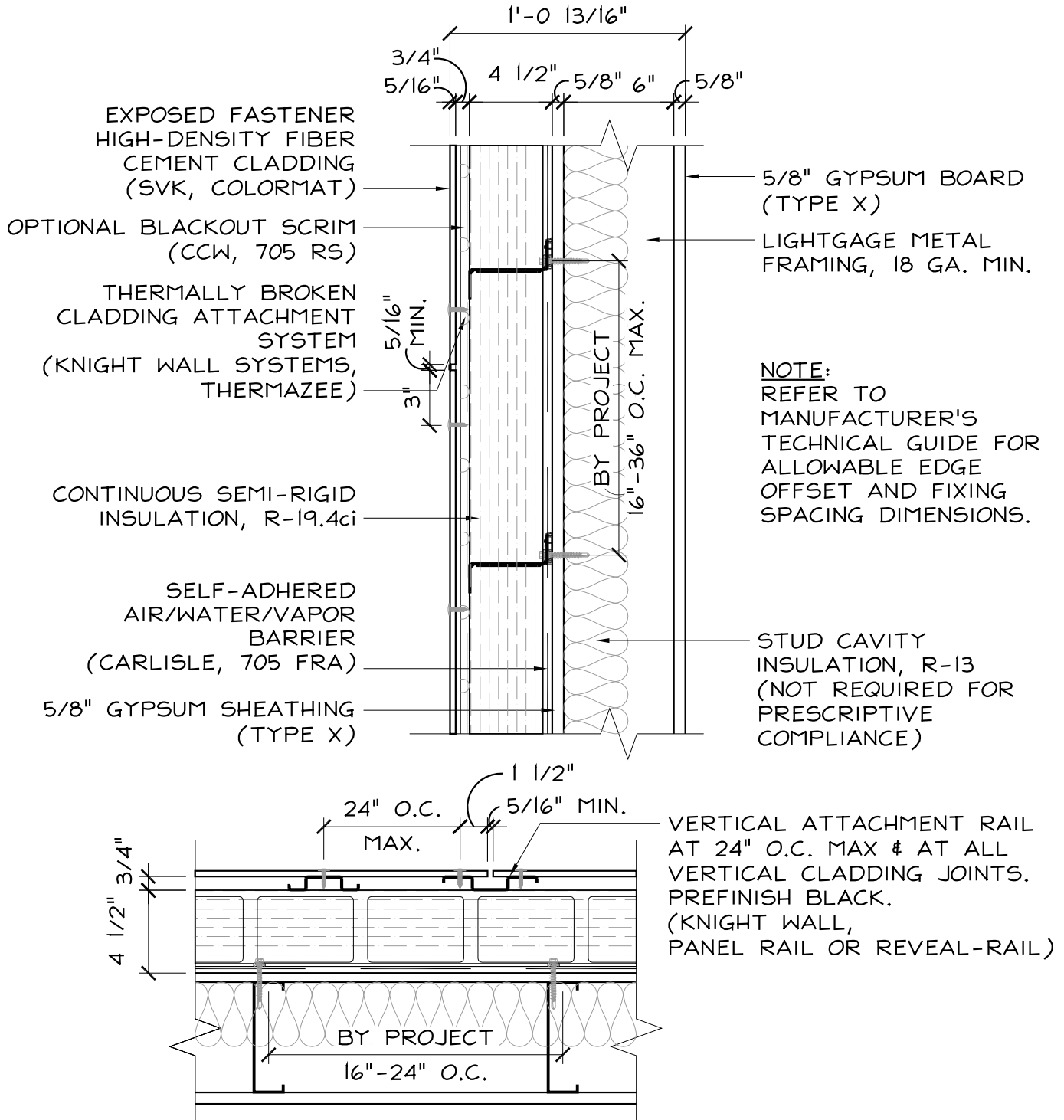




CODE = R-13 + R-10ci | U-0.055

BASE = R-19.4ci | U-0.053*

OPTIMIZED = R-19.4ci + R-13 | U-0.040*



FIBER CEMENT CLADDING w/ METAL STUD

SCALE: 1 1/2" = 1'-0"

PACE

BUILDING ENVELOPE REPRESENTATIVES

One Rockdale Street | Braintree, MA 02184
781-541-5060 | www.pacerepresentatives.com

FIBER CEMENT CLADDING SYSTEM w/ THERMALLY
BROKEN RAINSCREEN ATTCHMENT SYSTEM, SEMI-RIGID
CONTINUOUS INSULATION & METAL STUD BACK-UP
(IECC 2021 - CLIMATE ZONE 5)

Sketch #:

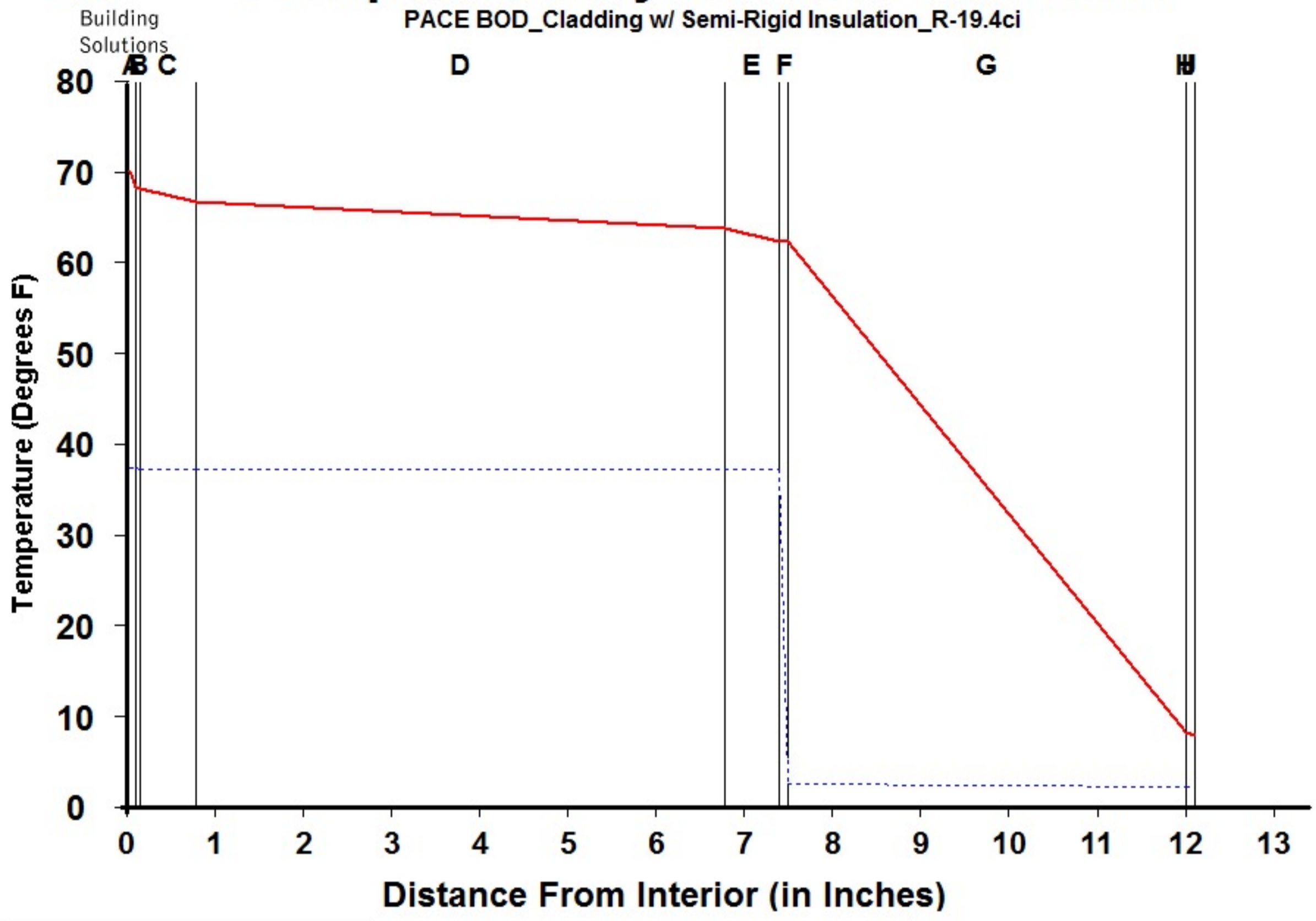
SK-01

Sheet: 1 of 1



Dewpoint Analysis - Dow Chemical

PACE BOD_Cladding w/ Semi-Rigid Insulation_R-19.4ci



Legend	
—	Actual Temperature
- - - -	Dewpoint Temperature

Dewpoint Theory predicts condensation in a system at any point where the actual and dewpoint temperature lines cross.

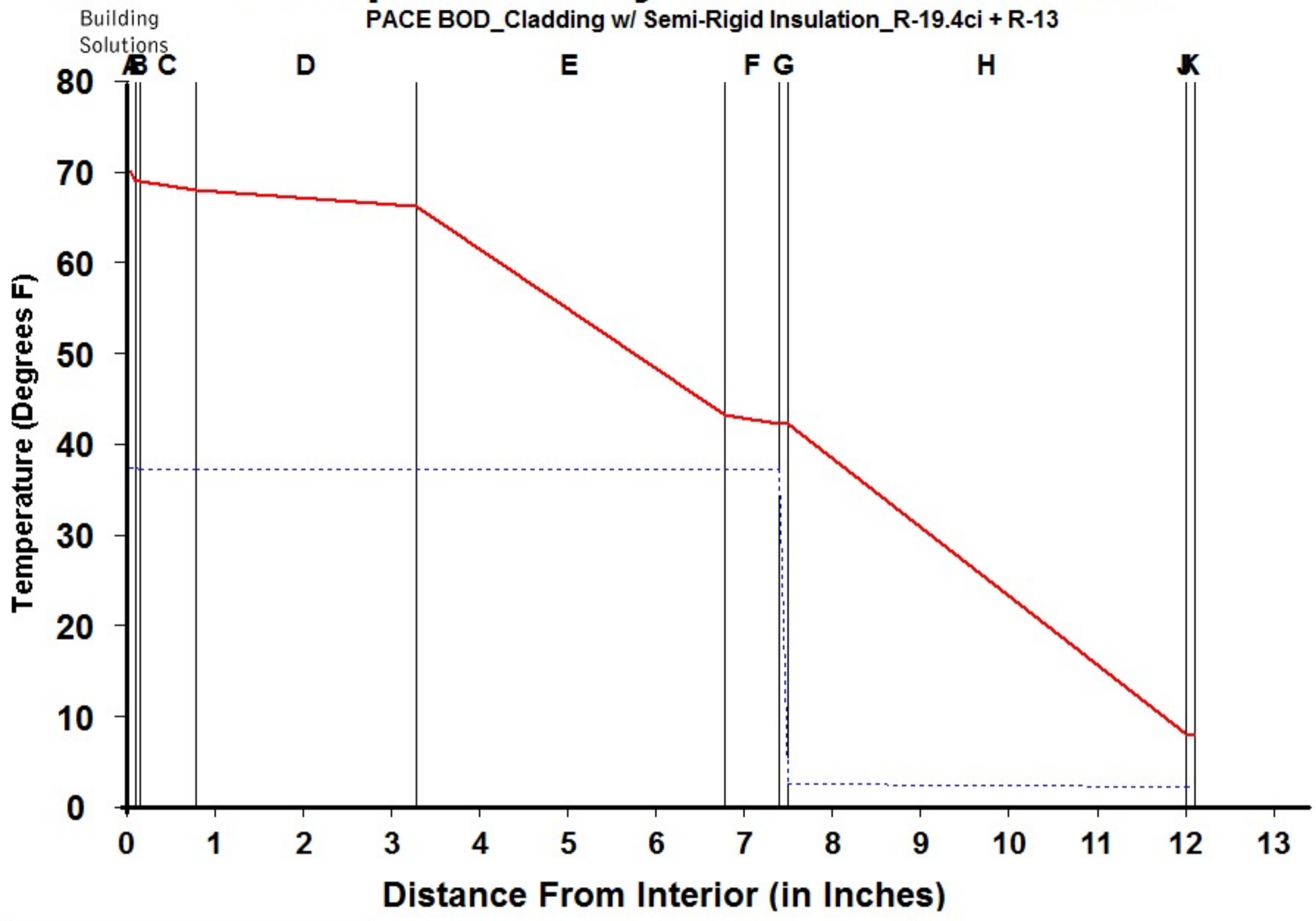
Conditions:		
	Interior	Exterior
Temperature	70.0	7.7
Humidity	30.0	75.0

Component Name	Thickness	R-Value	Rep	Interface	Temperature Actual	Temperature Dewpnt	Accum (oz/day-sqft)
A Interior Air Film	0.100	0.68	0.001	-A	70.00	37.17	0.000
B Latex Paint 2 Coat	0.050	0.01	0.500	AB	68.10	37.17	0.000
C Gypsum Board	0.625	0.56	0.023	BC	68.08	37.06	0.000
D Wall Air Space NonRefl	6.000	1.01	0.006	CD	66.52	37.06	0.000
E Gypsum Sheathing	0.625	0.56	0.027	DE	63.70	37.06	0.000
F CCW 705FRA	0.100	0.01	100.000	EF	62.14	37.05	0.000
G Mineral Wool (semi-rigid)	4.500	19.35	0.450	FG	62.11	2.44	0.000
H Wall Air Space NonRefl	0.000	0.00	0.000	GH	8.17	2.08	0.000
I Ventilated Cladding	0.000	0.00	0.000	HI	8.17	2.08	0.000
J Out Air Film Winter	0.100	0.17	0.001	IJ	8.17	2.08	0.000
K				JK	7.70	2.08	0.000
L				KL			
TOTAL	12.100	22.35	101.008	L-			



Dewpoint Analysis - Dow Chemical

PACE BOD_Cladding w/ Semi-Rigid Insulation_R-19.4ci + R-13



Legend

- Actual Temperature
- - - Dewpoint Temperature

Dewpoint Theory predicts condensation in a system at any point where the actual and dewpoint temperature lines cross.

Conditions:

	Interior	Exterior
Temperature	70.0	7.7
Humidity	30.0	75.0

Component Name	Thickness	R-Value	Rep	Interface	Temperature Actual	Temperature Dewpnt	Accum (oz/day-sqft)
A Interior Air Film	0.100	0.68	0.001	-A	70.00	37.17	0.000
B Latex Paint 2 Coat	0.050	0.01	0.500	AB	68.80	37.17	0.000
C Gypsum Board	0.625	0.56	0.023	BC	68.78	37.06	0.000
D Wall Air Space NonRefl	2.500	1.01	0.006	CD	67.80	37.06	0.000
E Batt Insulation	3.500	13.00	0.010	DE	66.02	37.06	0.000
F Gypsum Sheathing	0.625	0.56	0.027	EF	43.11	37.05	0.000
G CCW 705FRA	0.100	0.01	100.000	FG	42.12	37.05	0.000
H Mineral Wool (semi-rigid)	4.500	19.35	0.450	GH	42.10	2.44	0.000
I Wall Air Space NonRefl	0.000	0.00	0.000	HI	8.00	2.08	0.000
J Ventilated Cladding	0.000	0.00	0.000	IJ	8.00	2.08	0.000
K Out Air Film Winter	0.100	0.17	0.001	JK	8.00	2.08	0.000
L				KL	7.70	2.08	0.000
TOTAL	12.100	35.35	101.018	L-			