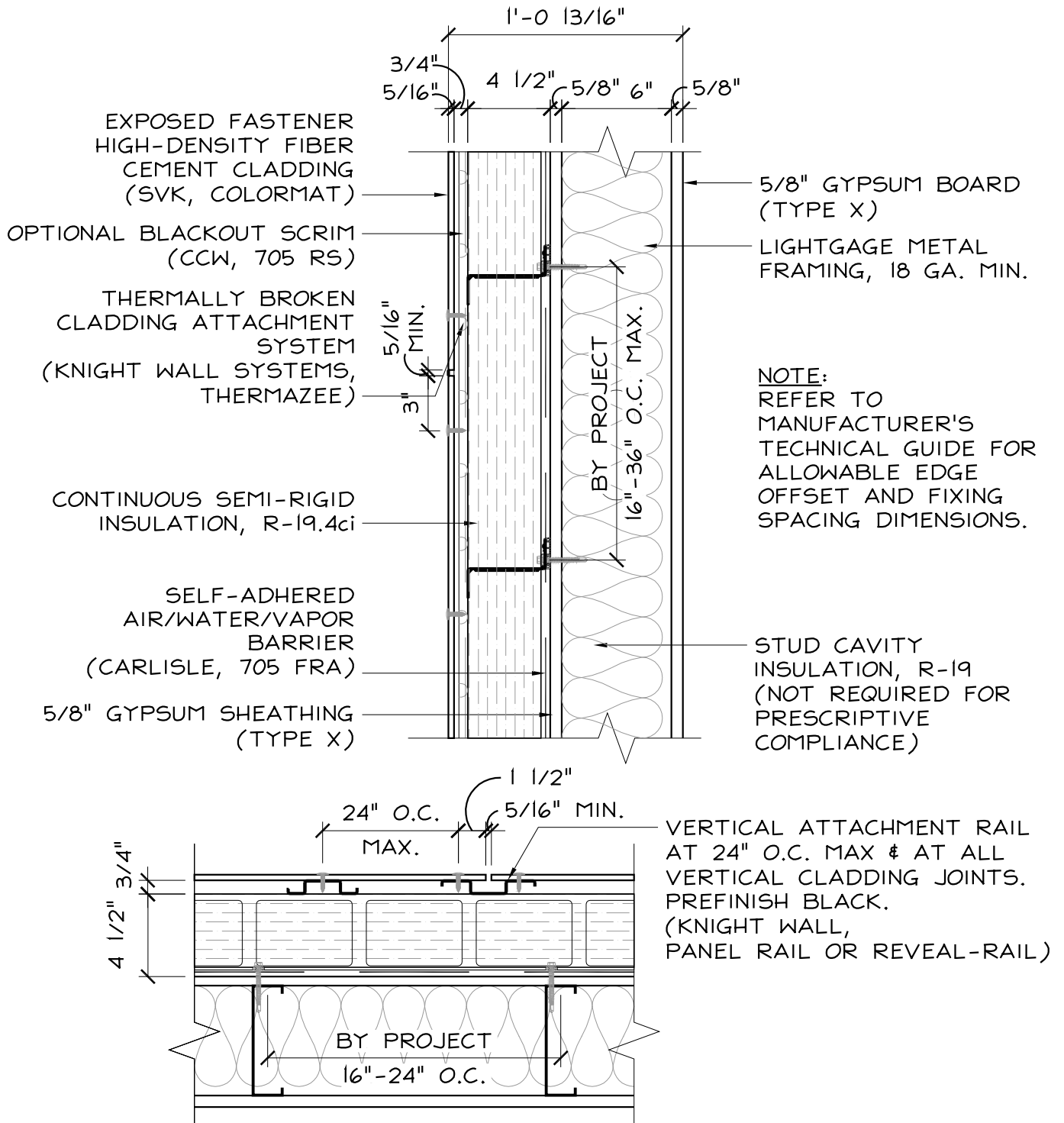




CODE = R-13 + R-10ci | U-0.055

BASE = R-19.4ci | U-0.053*

OPTIMIZED = R-19.4ci + R-19 | U-0.036*



FIBER CEMENT CLADDING w/ METAL STUD

SCALE: 1 1/2" = 1'-0"



FIBER CEMENT CLADDING SYSTEM w/ THERMALLY BROKEN RAINSCREEN ATTCHMENT SYSTEM, SEMI-RIGID CONTINUOUS INSULATION & METAL STUD BACK-UP (IECC 2021 + MA STRETCH ENERGY CODE)

Sketch #:

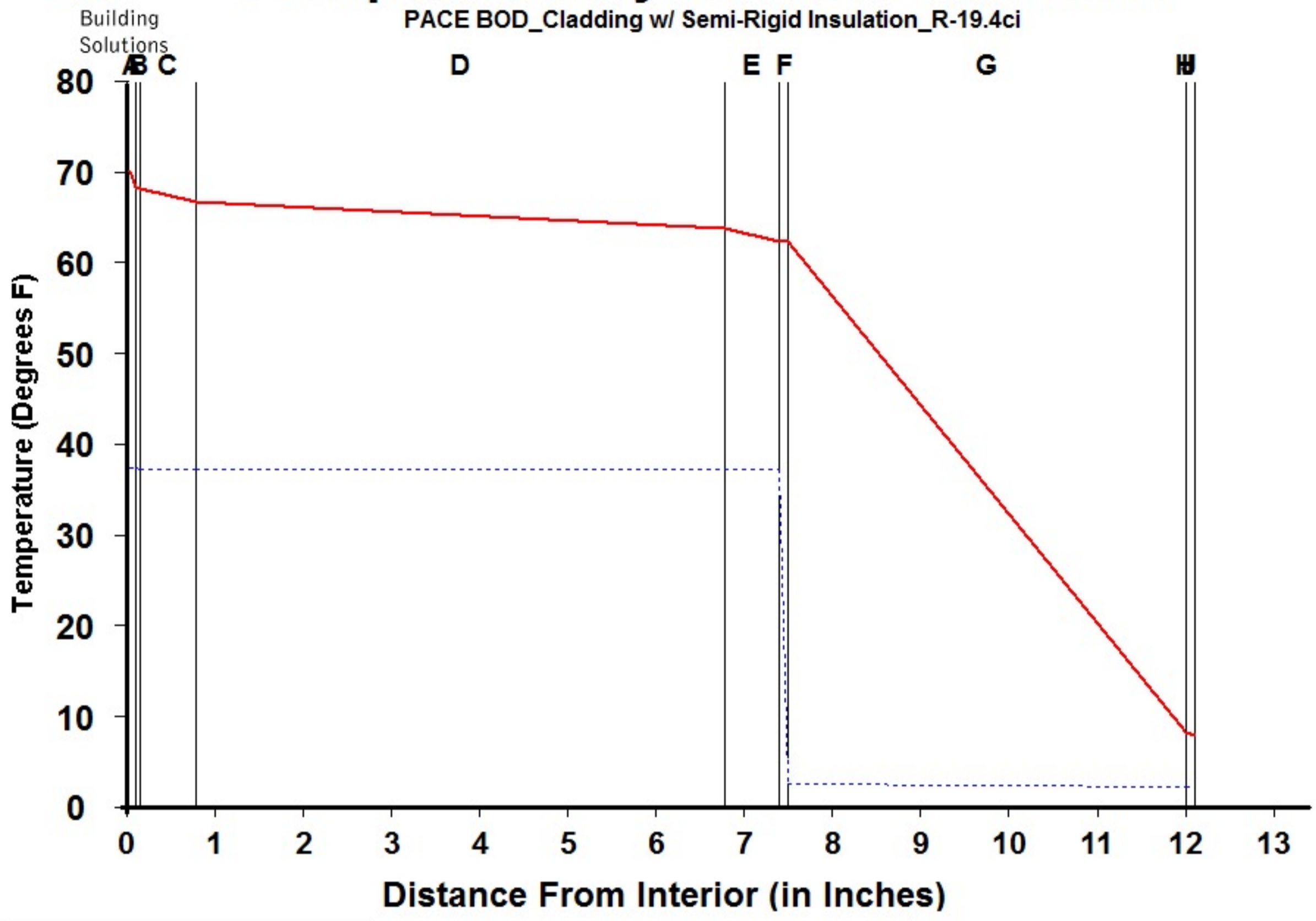
SK-01

Sheet: 1 of 1



Dewpoint Analysis - Dow Chemical

PACE BOD_Cladding w/ Semi-Rigid Insulation_R-19.4ci



Legend	
—	Actual Temperature
- - - -	Dewpoint Temperature

Dewpoint Theory predicts condensation in a system at any point where the actual and dewpoint temperature lines cross.

Conditions:		
	Interior	Exterior
Temperature	70.0	7.7
Humidity	30.0	75.0

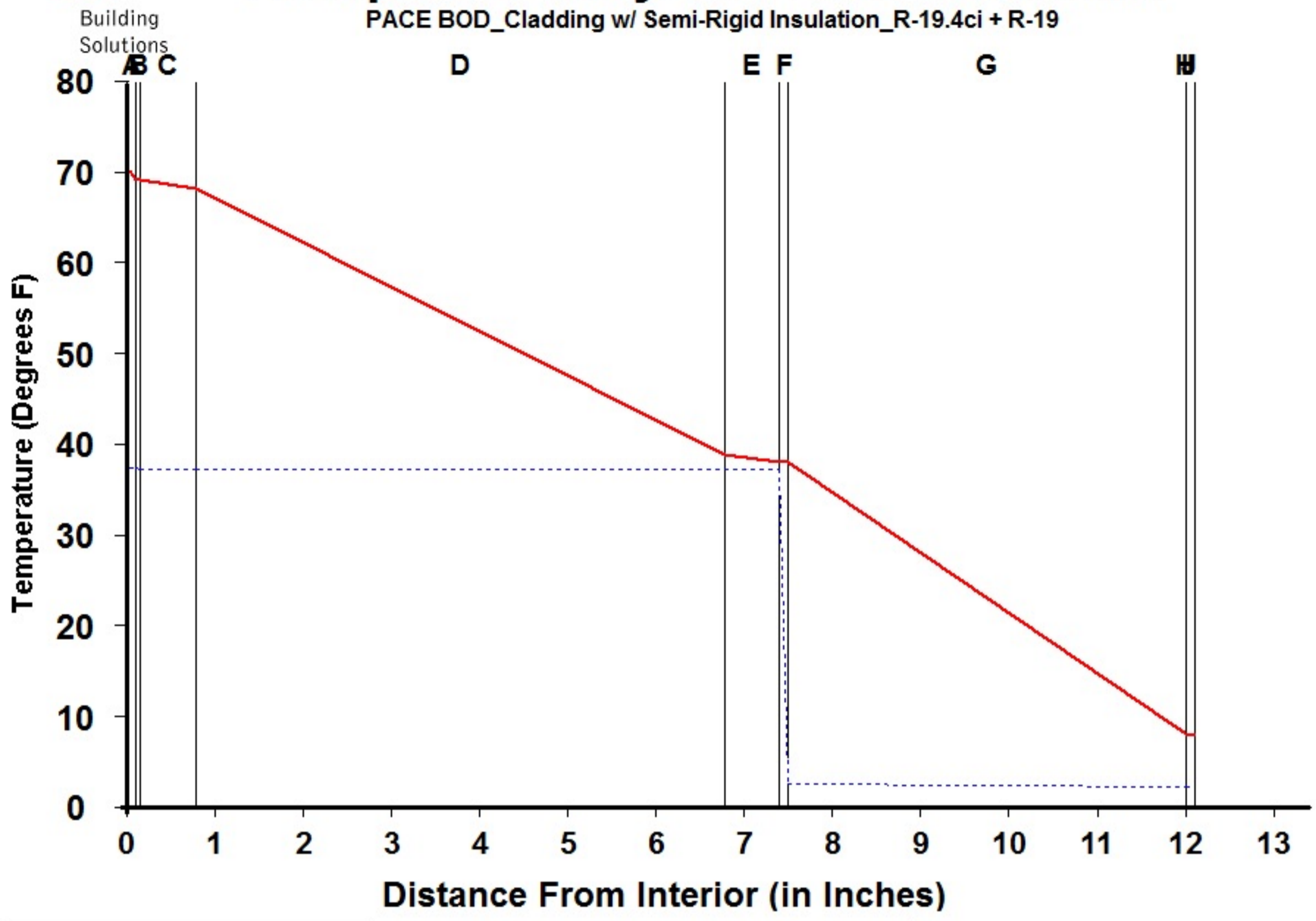
Component Name	Thickness	R-Value	Rep
A Interior Air Film	0.100	0.68	0.001
B Latex Paint 2 Coat	0.050	0.01	0.500
C Gypsum Board	0.625	0.56	0.023
D Wall Air Space NonRefl	6.000	1.01	0.006
E Gypsum Sheathing	0.625	0.56	0.027
F CCW 705FRA	0.100	0.01	100.000
G Mineral Wool (semi-rigid)	4.500	19.35	0.450
H Wall Air Space NonRefl	0.000	0.00	0.000
I Ventilated Cladding	0.000	0.00	0.000
J Out Air Film Winter	0.100	0.17	0.001
TOTAL	12.100	22.35	101.008

Interface	Temperature Actual	Temperature Dewpnt	Accum (oz/day-sqft)
-A	70.00	37.17	0.000
AB	68.10	37.17	0.000
BC	68.08	37.06	0.000
CD	66.52	37.06	0.000
DE	63.70	37.06	0.000
EF	62.14	37.05	0.000
FG	62.11	2.44	0.000
GH	8.17	2.08	0.000
HI	8.17	2.08	0.000
IJ	8.17	2.08	0.000
JK	7.70	2.08	0.000
KL			
L-			



Dewpoint Analysis - Dow Chemical

PACE BOD_Cladding w/ Semi-Rigid Insulation_R-19.4ci + R-19



Legend

- Actual Temperature
- - - Dewpoint Temperature

Dewpoint Theory predicts condensation in a system at any point where the actual and dewpoint temperature lines cross.

Conditions:

	Interior	Exterior
Temperature	70.0	7.7
Humidity	30.0	75.0

Component Name	Thickness	R-Value	Rep	Interface	Temperature Actual	Temperature Dewpnt	Accum (oz/day-sqft)
A Interior Air Film	0.100	0.68	0.001	-A	70.00	37.17	0.000
B Latex Paint 2 Coat	0.050	0.01	0.500	AB	68.95	37.17	0.000
C Gypsum Board	0.625	0.56	0.023	BC	68.93	37.06	0.000
D Batt Insulation	6.000	19.00	0.010	CD	68.07	37.06	0.000
E Gypsum Sheathing	0.625	0.56	0.027	DE	38.73	37.06	0.000
F CCW 705FRA	0.100	0.01	100.000	EF	37.86	37.05	0.000
G Mineral Wool (semi-rigid)	4.500	19.35	0.450	FG	37.85	2.44	0.000
H Wall Air Space NonRefl	0.000	0.00	0.000	GH	7.96	2.08	0.000
I Ventilated Cladding	0.000	0.00	0.000	HI	7.96	2.08	0.000
J Out Air Film Winter	0.100	0.17	0.001	IJ	7.96	2.08	0.000
K				JK	7.70	2.08	0.000
L				KL			
TOTAL	12.100	40.34	101.012	L-			