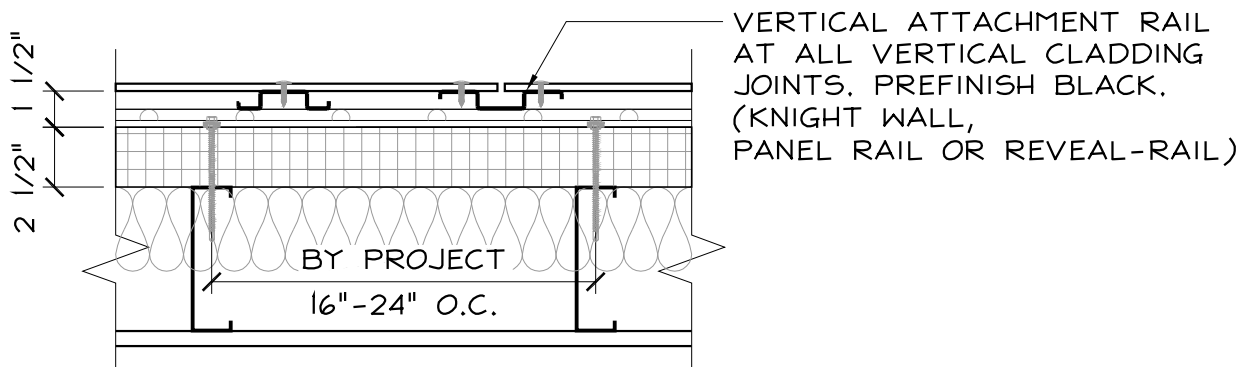
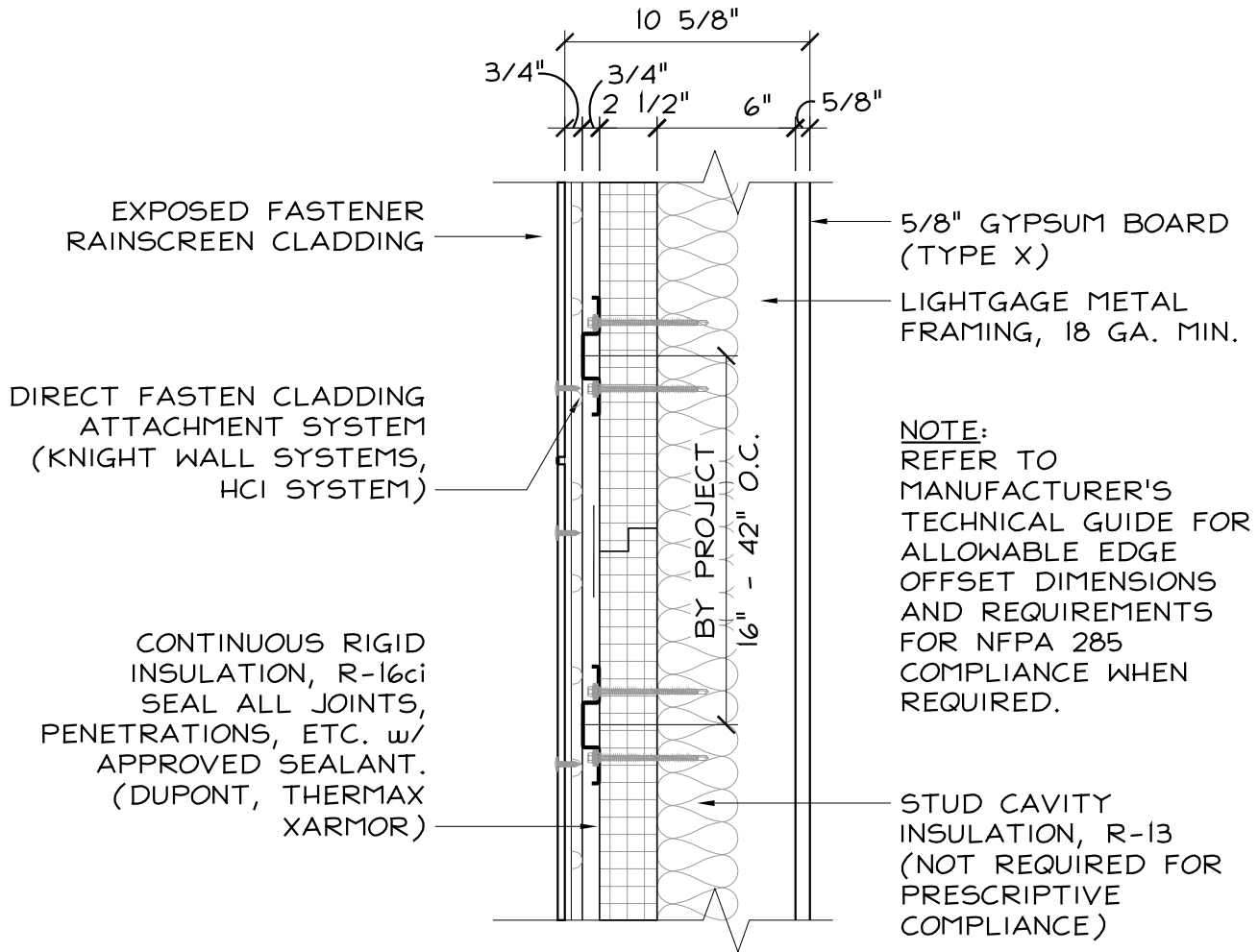




CODE = R-13 + R-10ci | U-0.055

BASE = R-16ci | U-0.054*

OPTIMIZED = R-16ci + R-13 | U-0.042*



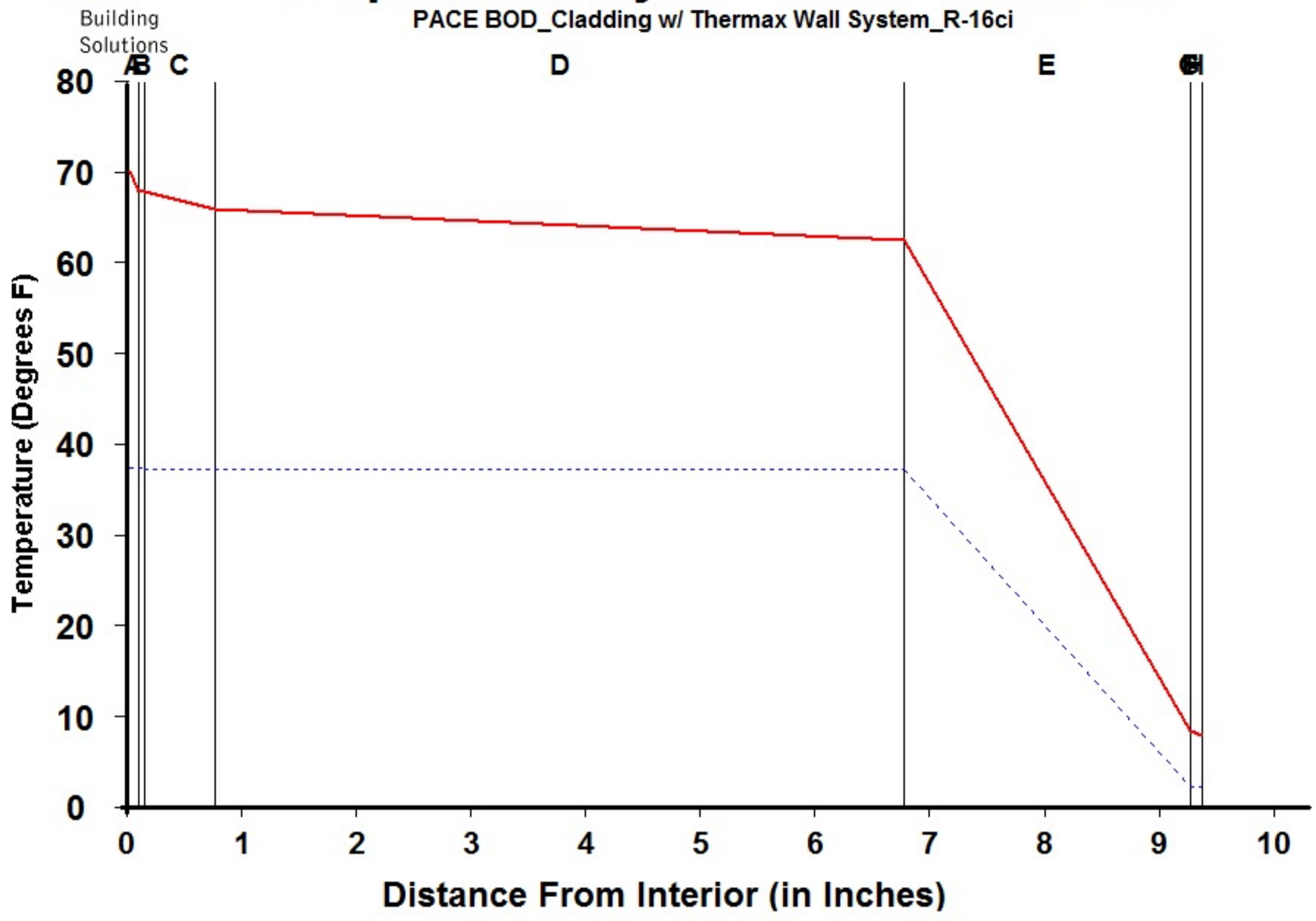
EXPOSED FASTENER CLADDING w/ METAL STUD

SCALE: 1 1/2" = 1'-0"



Dewpoint Analysis - Dow Chemical

PACE BOD_Cladding w/ Thermax Wall System_R-16ci



Legend	
—	Actual Temperature
- - - -	Dewpoint Temperature

Dewpoint Theory predicts condensation in a system at any point where the actual and dewpoint temperature lines cross.

Conditions:		
	Interior	Exterior
Temperature	70.0	7.7
Humidity	30.0	75.0

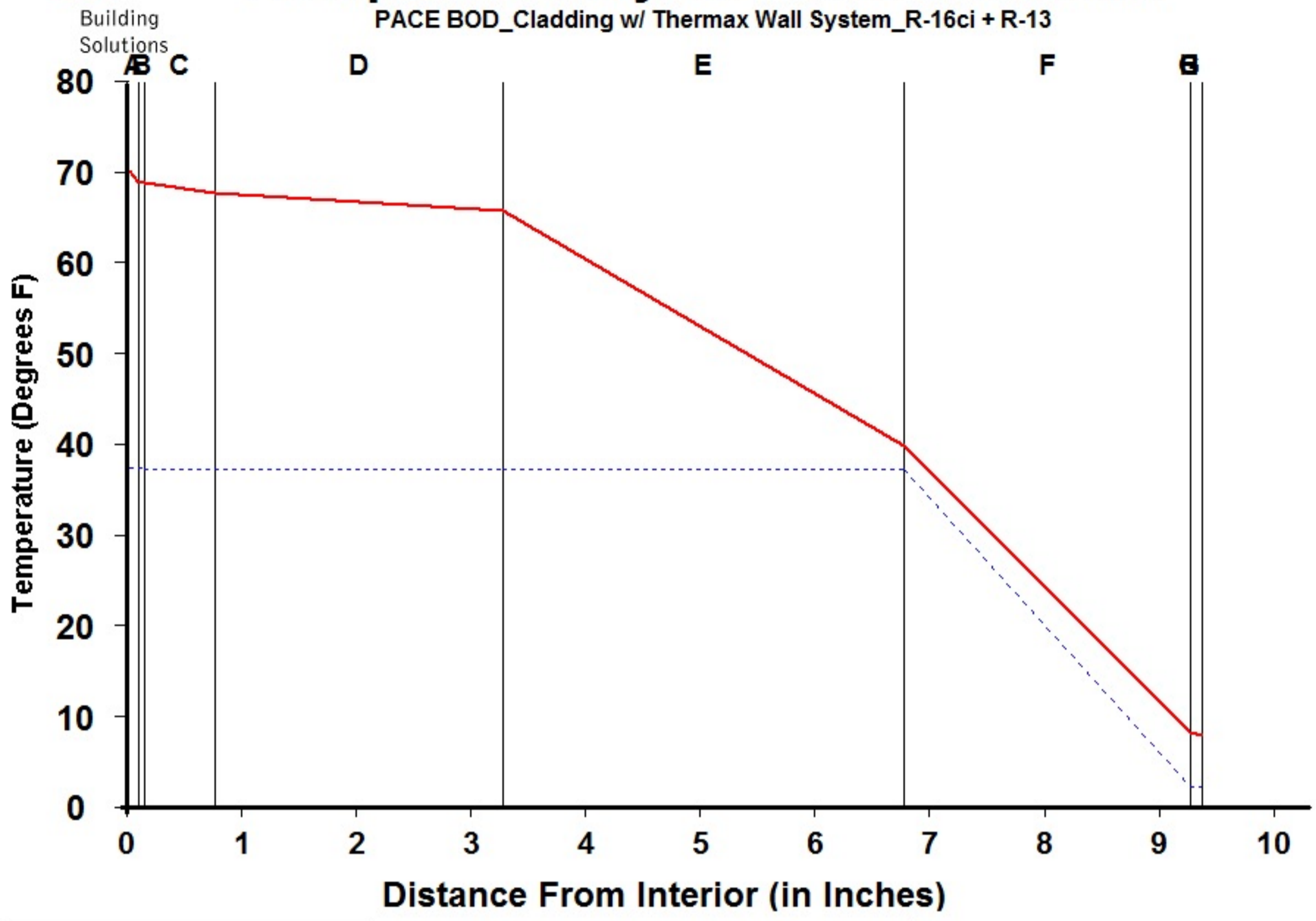
Component Name	Thickness	R-Value	Rep
A Interior Air Film	0.100	0.68	0.001
B Latex Paint 2 Coat	0.050	0.01	0.500
C Gypsum Board	0.625	0.56	0.023
D Wall Air Space NonRefl	6.000	1.01	0.006
E DuPont Thermax XArmor	2.500	16.00	500.000
F Wall Air Space NonRefl	0.000	0.00	0.000
G Ventilated Cladding	0.000	0.00	0.000
H Out Air Film Winter	0.100	0.17	0.001
I			
J			
K			
L			
TOTAL	9.375	18.43	500.531

Interface	Temperature Actual	Temperature Dewpnt	Accum (oz/day-sqft)
-A	70.00	37.17	0.000
AB	67.70	37.17	0.000
BC	67.67	37.15	0.000
CD	65.77	37.14	0.000
DE	62.36	37.14	0.000
EF	8.27	2.08	0.000
FG	8.27	2.08	0.000
GH	8.27	2.08	0.000
HI	7.70	2.08	0.000
IJ			
JK			
KL			
L-			



Dewpoint Analysis - Dow Chemical

PACE BOD_Cladding w/ Thermax Wall System_R-16ci + R-13



Legend	
—	Actual Temperature
- - - -	Dewpoint Temperature

Dewpoint Theory predicts condensation in a system at any point where the actual and dewpoint temperature lines cross.

Conditions:		
	Interior	Exterior
Temperature	70.0	7.7
Humidity	30.0	75.0

Component Name	Thickness	R-Value	Rep
A Interior Air Film	0.100	0.68	0.001
B Latex Paint 2 Coat	0.050	0.01	0.500
C Gypsum Board	0.625	0.56	0.023
D Wall Air Space NonRefl	2.500	1.01	0.006
E Batt Insulation	3.500	13.00	0.010
F DuPont Thermax XArmor	2.500	16.00	500.000
G Wall Air Space NonRefl	0.000	0.00	0.000
H Ventilated Cladding	0.000	0.00	0.000
I Out Air Film Winter	0.100	0.17	0.001
J			
K			
L			
TOTAL	9.375	31.43	500.541

Interface	Temperature Actual	Temperature Dewpnt	Accum (oz/day-sqft)
-A	70.00	37.17	0.000
AB	68.65	37.17	0.000
BC	68.63	37.15	0.000
CD	67.52	37.14	0.000
DE	65.52	37.14	0.000
EF	39.75	37.14	0.000
FG	8.04	2.08	0.000
GH	8.04	2.08	0.000
HI	8.04	2.08	0.000
IJ	7.70	2.08	0.000
JK			
KL			
L-			