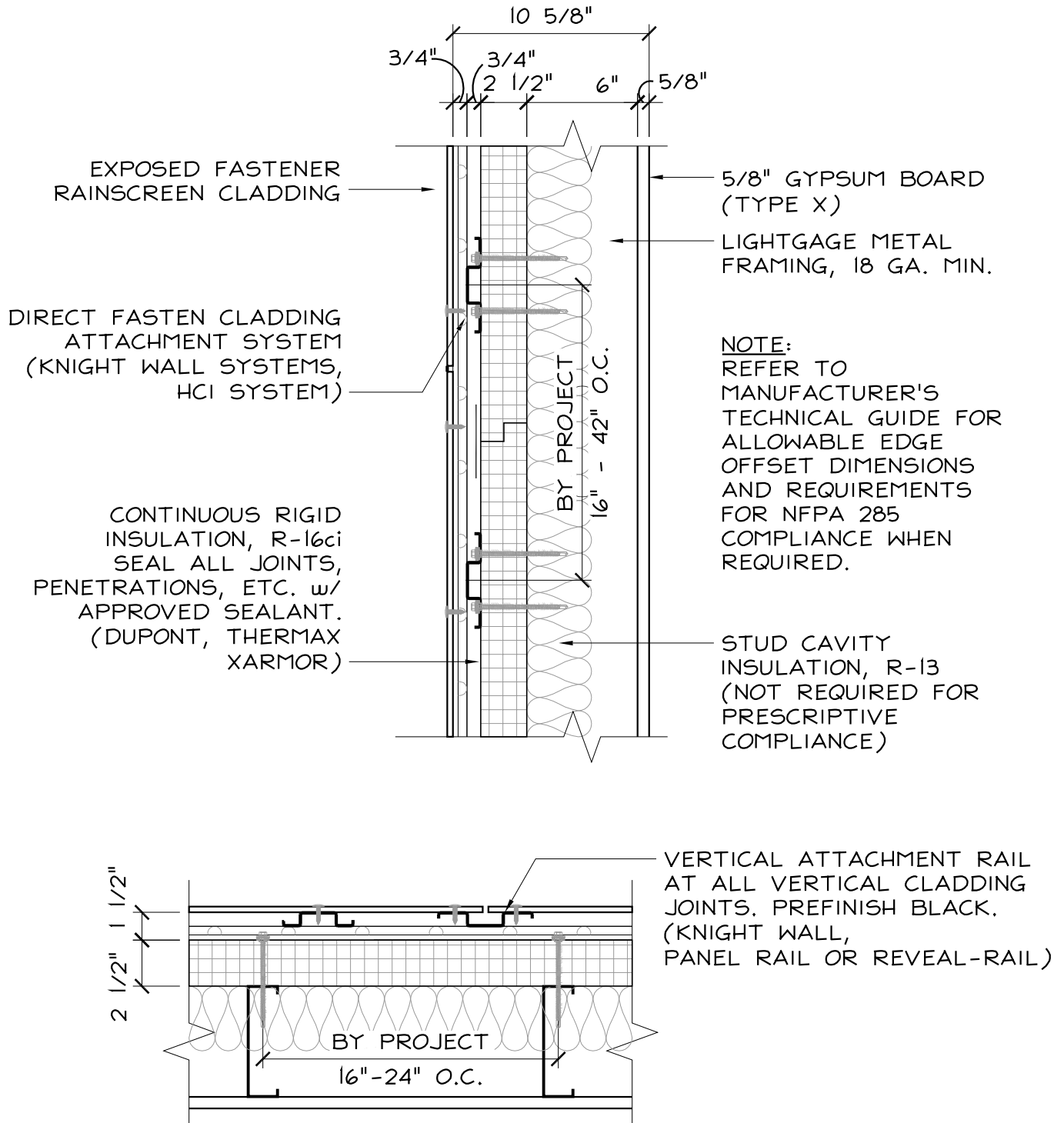




CODE = R-13 + R-10ci | U-0.055

BASE = R-16ci | U-0.054*

OPTIMIZED = R-16ci + R-13 | U-0.042*



EXPOSED FASTENER CLADDING w/ METAL STUD

SCALE: 1 1/2" = 1'-0"

PACE

BUILDING ENVELOPE REPRESENTATIVES

One Rockdale Street | Braintree, MA 02184
781-541-5060 | www.pacerepresentatives.com

EXPOSED FASTENER CLADDING SYSTEM w/ THERMALLY
BROKEN RAINSREEN ATTCHMENT SYSTEM, THERMAX
WALL SYSTEM & METAL STUD BACK-UP
(IECC 2021 - CLIMATE ZONE 5)

Sketch #:

SK-01

Sheet: 1 of 1