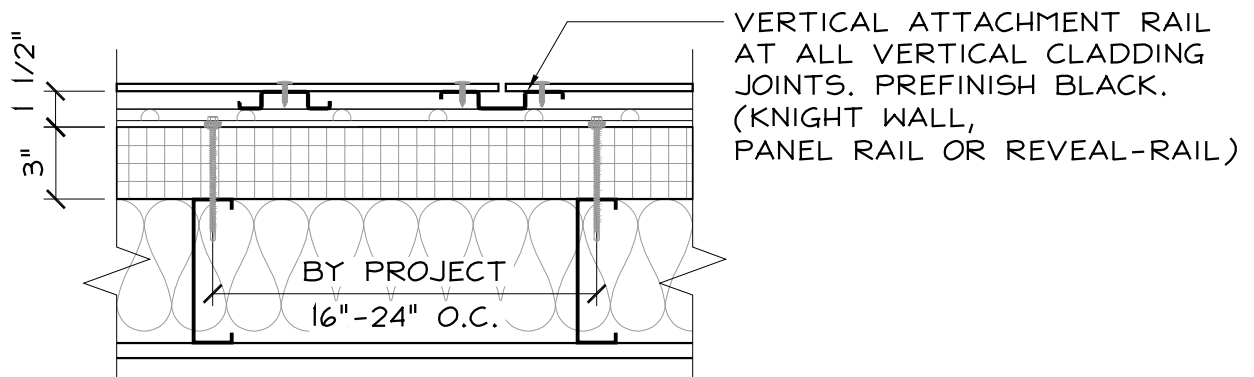
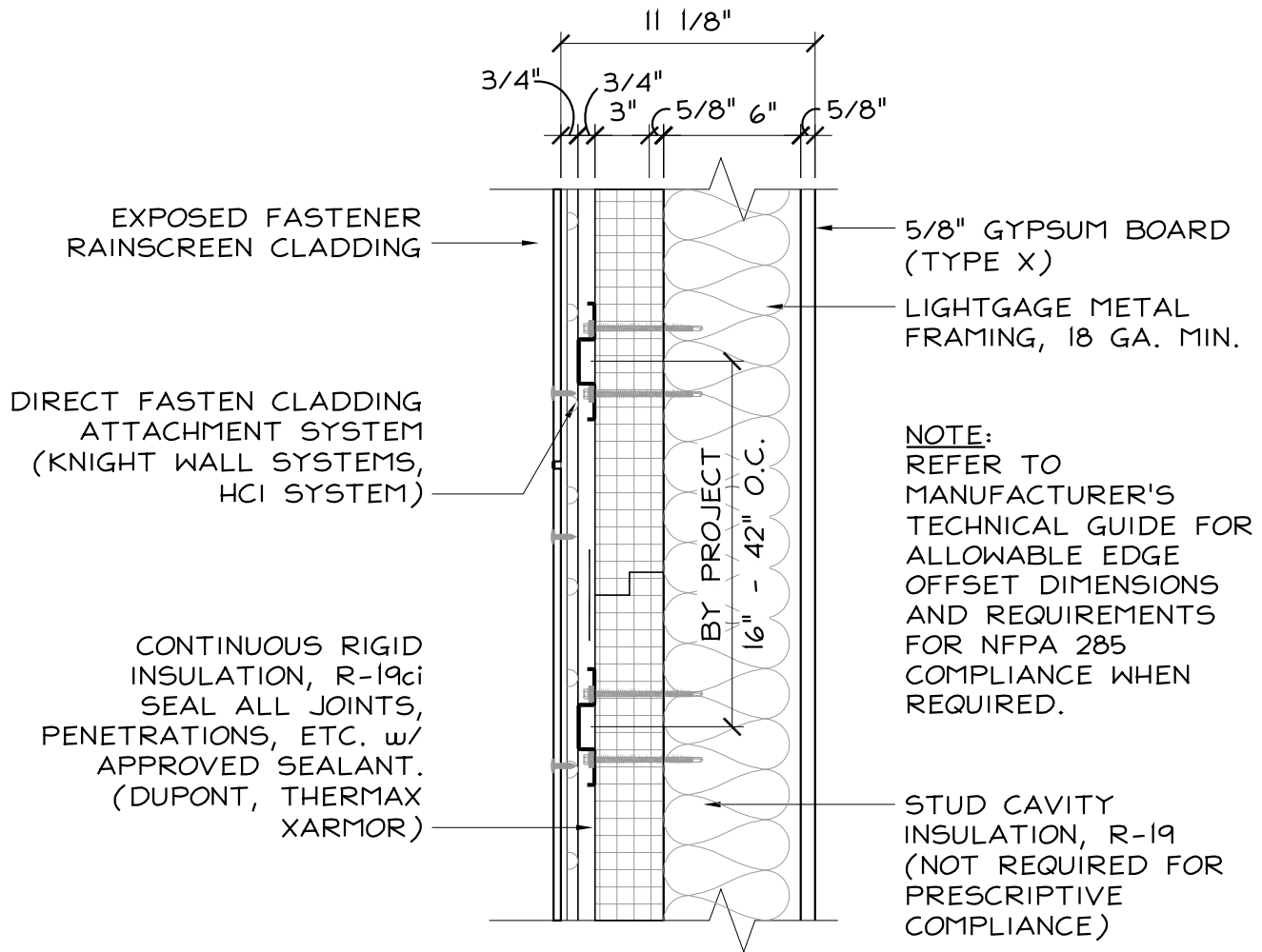




CODE = R-13 + R-10ci | U-0.055

BASE = R-19ci | U-0.051*

OPTIMIZED = R-19ci + R-19 | U-0.037*



FIBER CEMENT CLADDING w/ METAL STUD

SCALE: 1 1/2" = 1'-0"

PACE

BUILDING ENVELOPE REPRESENTATIVES

One Rockdale Street | Braintree, MA 02184
781-541-5060 | www.pacerepresentatives.com

EXPOSED FASTENER CLADDING SYSTEM w/ THERMALLY
BROKEN RAINSCREEN ATTCHMENT SYSTEM, THERMAX
WALL SYSTEM & METAL STUD BACK-UP
(IECC 2021 + MA STRETCH ENERGY CODE)

Sketch #:

SK-01

Sheet: 1 of 1

Reference detail. Registered professional in responsible charge to review prior to use | Revised: September 2023

* Assembly U-Factor thermal derating based on manufacturer's 3D thermal modeling for cladding attachment system and 24" o.c. girt spacing and 16" o.c. fastener spacing